

TRIUMPH GULF COAST, INC. PRE-APPLICATION FORM

Triumph Gulf Coast, Inc. (“Triumph Gulf Coast”) has created a pre-application process to provide initial consideration of potential ideas for projects or programs that may seek an award of funding. Applicants are required to participate in the pre-application process. Notwithstanding the response from Triumph Gulf Coast on the pre-application form, an Applicant may still elect to submit an Application.

APPLICANT INFORMATION:

Name of Individual/Entity/Organization:

Panama City – Bay County Airport and Industrial District / Northwest Florida Beaches International Airport (ECP)

Brief Description of Background of Individual/Entity/Organization:

The Northwest Florida Beaches International Airport opened in May of 2010 offering the Region new opportunities in air travel as well as aerospace manufacturing and repair. Air travel from Panama City prior to the opening of the Airport was from PFN, which served the City of Panama City and its surrounding communities with regional jet service to Atlanta. In May 2010, PFN closed and ECP opened with a 10,000 foot runway plus land for development. ECP brought to the Region, Southwest Airlines and the up-gauging of Delta aircraft, thus becoming the first Main Line Station for Delta Airlines in the Panhandle. Since the opening, United Airlines has added service to Houston’s George Bush Intercontinental Airport with connections to more than 160 cities worldwide.

ECP continues to be in the spotlight of site consultants due to its close proximity to the beach, 4 lane highway system, quick and easy access to the global air traffic network and most importantly, its status of being a “Field of Opportunity”.

Contact Information:

Primary Contact Information: Parker W. McClellan, Jr. A.A.E.
Title: Executive Director
Mailing Address: 6300 West Bay Parkway, Suite A, Panama City, FL 32401
Telephone Number: 850 636 8950
Email Address: pmcclellan@pairport.com
Website: www.iflybeaches.com

Names of co-applicants, partners or other entities, organizations that will have a role in the proposed project or program:

- Bay County Economic Development Alliance
- Bay County Government
- Space Florida

- Enterprise Florida (Qualified Target Industries and Training Dollars)
- Florida Department of Transportation
- Project SoHo
- Triumph Gulf Coast

REQUIRED EXECUTIVE SUMMARY:

In a maximum of three (3) pages, please describe the proposed project or program, including (i) the amount of funds being sought from Triumph Gulf Coast; (ii) the amount and identity of other sources of funds for the proposed project or program; (iii) the location of the project or program; (iv) summary description of the proposed program, including how the program will be transformational and promote economic recovery, diversification, and enhancement of the disproportionately affected counties, and (v) a summary timeline for the proposed project or program.

Project “SoHo” is an aviation related advanced manufacturer located in the northeastern part of the United States. They are looking to expand their operations by locating a second facility in the Southeast. This company is a parts supplier to major OEMs (Original Equipment Manufacturers). Project SoHo will generate 105 new jobs over the first 6 years of operation in our Region and entail a capital investment of approximately \$30 - \$35M. The estimated sales for the company are \$22,000,000 by the end of year 6.

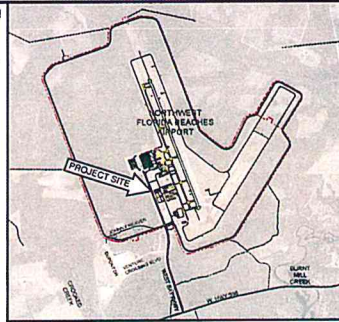
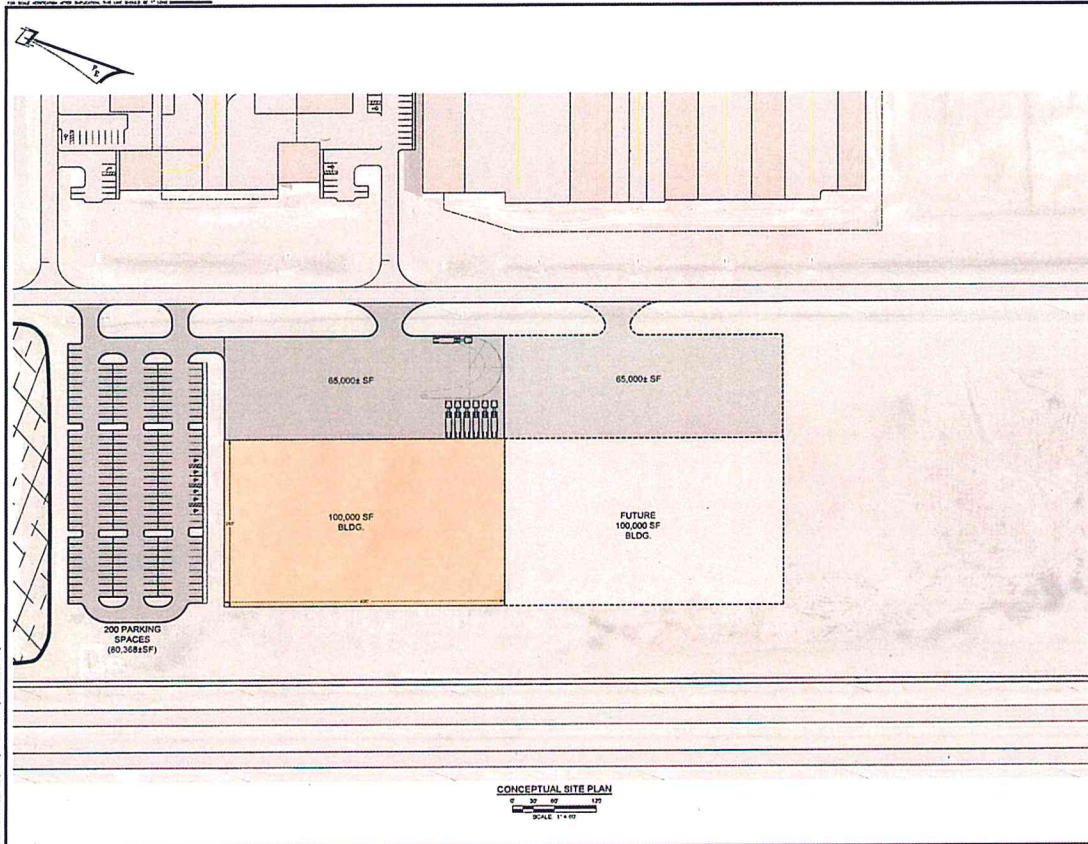
The Project SoHo Team is looking at a build-to-suit site at the Northwest Florida Beaches International Airport (ECP). The site is within the Phase 1 approved 1,200 acres at the Airport.

The company is looking for a location that is centrally located, as this will provide access to the Interstate System and to the National Airspace System. The site location at the Airport provides easy access to the Interstate System, as well as to other parts manufacturers and suppliers in the area.

The Airport, in close partnership with Venture Crossings, provides an ideal location for aerospace industries, offering the option for a facility on private or public land. GKN has become the Region’s anchor aerospace manufacturing company, Based on the continuing growing needs of the aerospace market, the need for facilities for both manufacturing and suppliers is expected to increase.

The conceptual illustration below provides a site concept at ECP, which includes a 100,000 square foot expandable manufacturing facility with a loading dock area for shipping and receiving along with a joint use automobile parking lot. The cost of the facility and infrastructure improvements is estimated to be \$8.5M.

The request for Triumph funding is for the infrastructure improvements including joint automobile parking, loading docks, and the first phase foundation of 100,000 square feet manufacturing facility. The proposed funding method includes the following sources: ECP (\$800,000), Florida Department of Transportation (\$800,000), Project SoHo (\$3,500,000), Space Florida (preferred financing) and Triumph Gulf Coast (\$3,400,000). Space Florida will finance the building and capital equipment with preferred funding and tax incentives).



VICINITY MAP
 0 1,000 2,000 4,000
 SCALE 1" = 200'

CONCEPTUAL SITE DATA	
TOTAL DEVELOPMENT AREA	822 SF
TOTAL BUILDING AREA	222 SF
PARKING	100,000 SF
REQUIREMENTS PROVIDED	200 PARKS
	200 PARKS

PREPARED WITHOUT BENEFIT OF TESTS OR SOILSURVEY AND SOIL INVESTIGATION TEST, THEREFORE SITE LAYOUT & STORMWATER BASIN SIZING IS PRELIMINARY.

CONCEPTUAL SITE PLAN
 0 50 100 150
 SCALE 1" = 40'

REV	DATE	BY	REVISIONS	SCALE AS NOTED
				DESIGNED BY: EAP
				DRAWN BY: J.C.
				REVIEWED BY: EAP
				DATE: OCTOBER 2011
				ROAD FILE NAME: 10889_CSP_A.dwg

PANHANDLE ENGINEERING, INC.
 15 UNIVERSITY BLVD. SUITE 200
 3005 SOUTH HIGHWAY 77, TAMPA, FLORIDA 33614
 813-988-7828 Fax: 813-988-7829

CONCEPTUAL SITE PLAN 'A'
 TRIUMPH AIRPORT
 PROJECTS
 BAY COUNTY, FLORIDA

DATE: OCTOBER 2011 PROJECT NUMBER: 10889 SHEET NUMBER: 1 of 1

SHEET NUMBER 1 of 1
PROJECT NUMBER 10889

ALL RIGHTS RESERVED BY PANHANDLE ENGINEERING, INC. FOR THE PROJECTS LISTED HEREIN. THIS DOCUMENT IS THE PROPERTY OF PANHANDLE ENGINEERING, INC. AND IS NOT TO BE REPRODUCED OR TRANSMITTED IN ANY FORM OR BY ANY MEANS, ELECTRONIC OR MECHANICAL, INCLUDING PHOTOCOPYING, RECORDING, OR BY ANY INFORMATION STORAGE AND RETRIEVAL SYSTEM, WITHOUT THE WRITTEN PERMISSION OF PANHANDLE ENGINEERING, INC.

10889 CONCEPTUAL SITE PLAN 'A' PROJECTS CONCEPTUAL SITE PLAN 'A' Sheet 1 of 1

IMPORTANT NOTICE

This pre-application process will **not** result in an award of funding by Triumph Gulf Coast. Rather, this process is designed to facilitate submission of ideas for potential projects or programs before the Applicant expends time and/or resources to complete a full Application. All Applicants for funding are required to complete an Application, which will be scored, and then considered for award in the discretion of Triumph Gulf Coast Board.