

Highway 90 East Water and Sewer Expansion

TRIUMPH GULF COAST, INC. PRE-APPLICATION FORM

Triumph Gulf Coast, Inc. ("Triumph Gulf Coast") has created a pre-application process to provide initial consideration of potential ideas for projects or programs that may seek an award of funding. Applicants are required to participate in the pre-application process. Notwithstanding the response from Triumph Gulf Coast on the pre-application form, an Applicant may still elect to submit an Application.

APPLICANT INFORMATION:

Name of Individual/Entity/Organization: Okaloosa County

Brief Description of Background of Individual/Entity/Organization: County government

Contact Information:

Primary Contact Information: Jane Evans

Title: Grants & RESTORE Manager

Mailing Address: 1250 N Eglin Parkway Suite 102 Shalimar, FL 32579

Telephone Number: 850-651-7521

Email Address: jevans@co.okaloosa.fl.us

Website: www.co.okaloosa.fl.us

Names of co-applicants, partners or other entities, organizations that will have a role in the proposed project or program: BCC, Okaloosa County EDC, Okaloosa County Public

Works, FDEP, FDOT, FDOH, NFWFMD, and CSX Railroad

REQUIRED EXECUTIVE SUMMARY:

In a maximum of three (3) pages, please describe the proposed project or program, including (i) the amount of funds being sought from Triumph Gulf Coast; (ii) the amount and identity of other sources of funds for the proposed project or program; (iii) the location of the project or program; (iv) summary description of the proposed program, including how the program will be transformational and promote economic recovery, diversification, and enhancement of the disproportionately affected counties, and (v) a summary timeline for the proposed project or program.

IMPORTANT NOTICE

This pre-application process will **not** result in an award of funding by Triumph Gulf Coast. Rather, this process is designed to facilitate submission of ideas for potential projects or programs before the Applicant expends time and/or resources to complete a full Application. All Applicants for funding are required to complete an Application, which will be scored, and then considered for award in the discretion of Triumph Gulf Coast Board.

Executive Summary

Highway 90 East Water & Sewer Main Extensions

Okaloosa County Water & Sewer (OCWS)

Project Description

- Extending OCWS' existing potable water main ~4.3 miles to the east, along Highway 90, from Shoffner Blvd to Jericho Rd.
- Extending OCWS' sanitary sewer force main ~3.0 miles to the east, along Highway 90, from Clint Mason Rd to Jericho Rd, and a portion on Fairchild Rd to the Bob Sikes Water Reclamation Facility.
- Water and sewer mains along Highway 90 have previously been designed and are shovel ready. Design is needed for the sewer force main portion on Fairchild Road. Okaloosa County has already invested heavily in the existing water and sewer facilities in this portion of unincorporated Okaloosa County. Examples include the relatively new Bob Sikes Water Reclamation Facility upgrade, numerous sewer pump stations, the existing sewer force main on Highway 90 to Clint Mason Rd, the water main bore already installed under the Shoal River, and numerous other water transmission mains.

(i) Funds Being Sought from Triumph Gulf Coast

- For the potable water main extension, the funding request is \$800K.
- For the sewer main extension, the funding request is \$700K.
- **Total funding request is \$1.5M.**
- This request includes: design fees associated with the Fairchild Rd portion of the project, local/state permitting fees, material procurement (pipe, fittings, etc.) for all construction phases, bore installation (under major roads and environmentally sensitive areas), and other construction-related services.
- Note that upon completion of the sewer force main extension, future pump stations would need to be designed and constructed that would "energize" the line, in order to transmit sewage from the specific developments to the Bob Sikes Water Reclamation Facility. The cost for these pump stations is not included in the above-mentioned request, as pump stations would be planned and designed as individual projects move forward.

(ii) Other Sources of Funds for the Project

- For the water main extension, the above-mentioned request is supplemented by an estimated \$640K in resources from Okaloosa County in the form of in-house labor and equipment.
- For the sewer main extension, the above-mentioned requested is also supplemented by an estimated \$620K in resources from Okaloosa County in the form of in-house labor and equipment. This makes the total **County contribution estimated at \$1.26M.**
- If this request is accepted, no additional funding will be necessary for the successful completion of this transformative infrastructure project. Expanding the transmission capacity for both water and sewer along the Highway 90 corridor and strengthening the public infrastructure offerings in the unincorporated area will ensure that further development can continue to be achieved in eastern Okaloosa County.

(iii) Project Location

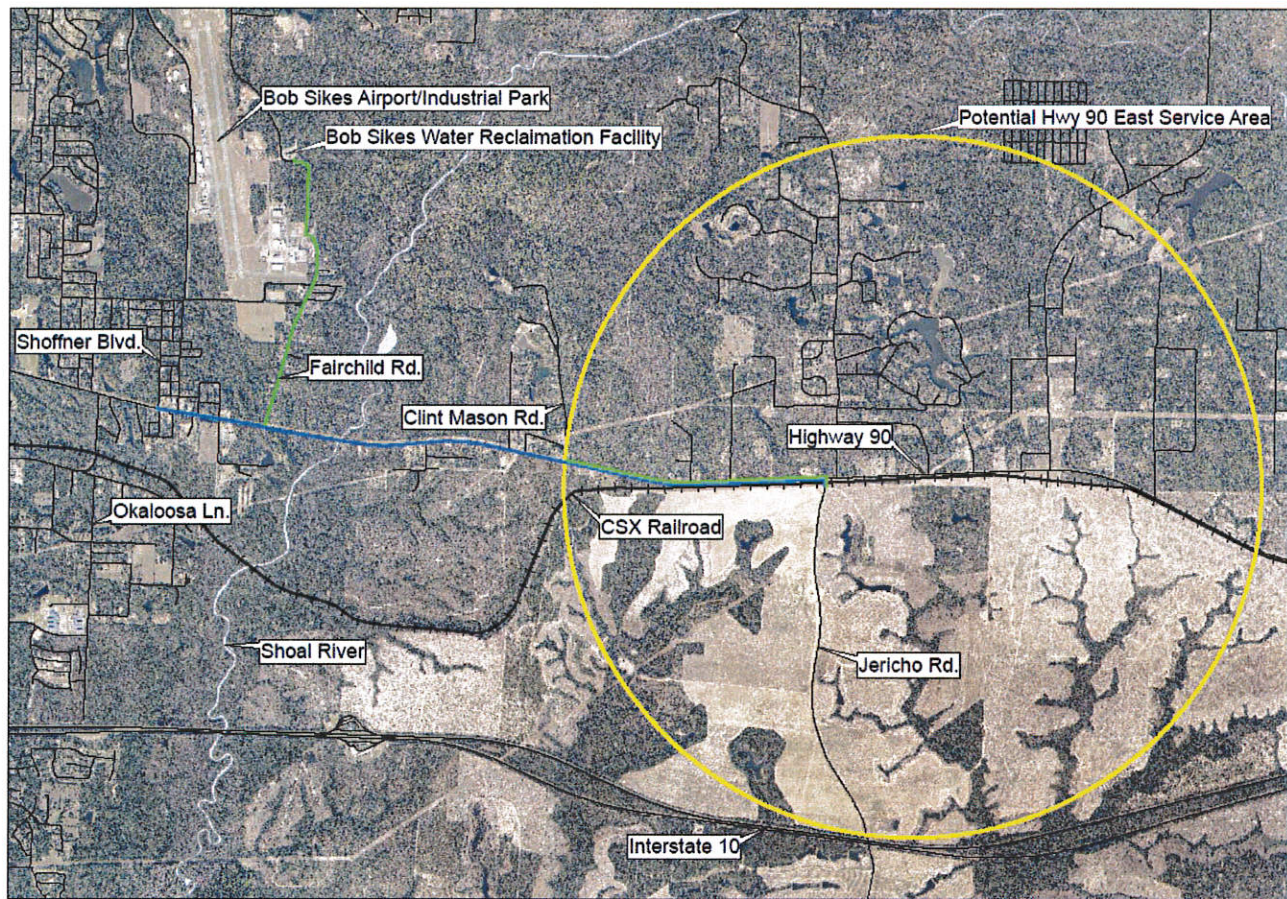
- Highway 90 East of Crestview, Florida, between the Shoal River and Walton County line. This area contains thousands of undeveloped acres that are prime for large scale industrial, residential, and commercial growth, including the 10,000-acre Shoal River Ranch property that straddles two major highways and a railroad. This area, marketed heavily by the Okaloosa County Economic Development Council (EDC), is served by multimodal transportation options including Interstate 10,

For more information, please contact:

Mark Wise, P.E., Deputy Director, mwise@co.okaloosa.fl.us, 850-685-0297

Okaloosa County Water & Sewer, 1804 Lewis Turner Blvd., Suite 300, Fort Walton Beach, FL 32547

US Highway 90, the CSX Railroad, and the Shoal River, adding to the enormous potential for economic growth and job creation. For this growth and economic development to continue, public water and sewer infrastructure is a necessity.



(iv) Description of Project Benefits

- Over the past few years, there have been numerous development projects lost in the Highway 90 East Area. With these projects lost, the state of Florida missed on the opportunity for approximately 1,700 permanent jobs and a capital investment of \$1.15B, in total. These projects involve such industries as manufacturing, aerospace, and construction materials, most of which would have created technical jobs for a highly skilled workforce. This project increases the potential to end the trend of lost opportunities.
- Okaloosa County's EDC has had numerous pending projects in the manufacturing industry and corporate headquarters targeted for this area. These projects could create over 1,100 permanent jobs and a capital investment of approximately \$400M. Unfortunately, the projects cannot happen without water and sewer infrastructure. Water and sewer mains must be extended from existing systems in order to actually achieve job creation and economic diversification.
- Okaloosa County is an important working-class community. The people who live in the County support the military mission, members of the armed forces, and thriving nearby tourist industries. The activities of Bob Sikes Airport and the Bob Sikes Industrial Park (BSIP) provide a significant portion of the local economy, particularly in the area north of Eglin AFB. Modern, public water and wastewater infrastructure in the area is important, given increasing DOD contracts and USAF partnerships. Providing for these partnerships is leading to heightened demand for water and wastewater infrastructure serving the Highway 90 corridor east of the Shoal River. Improvements to

For more information, please contact:

Mark Wise, P.E., Deputy Director, mwise@co.okaloosa.fl.us, 850-685-0297

Okaloosa County Water & Sewer, 1804 Lewis Turner Blvd., Suite 300, Fort Walton Beach, FL 32547

the availability, capacity, efficiency, and reliability of the water/wastewater infrastructure will not only affect commercial and industrial expansion, but provide further opportunities for residential development that will follow increased business opportunities.

- Florida's economy is deeply intertwined with its airport system and aviation industry. Okaloosa County serves as an important element of this system due to its aviation investments that support tourism, local endeavors, and the military. Okaloosa's gross economic impact is \$8.8 billion, providing over 71,780 jobs. The Bob Sikes Airport, serviced by Bob Sikes Water Reclamation Facility, houses an 8,000-foot runway. This runway accommodates large military support aircraft, such as the U.S. Air Force Boeing C-28, which is used to transport helicopters to local and regional airspace. Additionally, the Air Force and Navy use the airport for extensive flight training purposes due to its Instrument Landing System. In Okaloosa County, defense-related spending exceeds \$3.1 billion dollars—73% of economic activity. Bob Sikes is a key player for the local community, providing over 2,700 jobs, which host a total payroll of about \$108M per year. These impacts come from the airport itself, its tenants, and visitors utilizing general aviation aircraft. These visitors alone generate an indirect impact of \$1.85M per year to the community. Infrastructure improvements to the BSIP service area along the Highway 90 corridor will help to ensure long-term financial stability for the community and region. Fitting with Northwest Florida FORWARD goals, completion of this project would help to keep Florida's infrastructure state-of-the-art and further improve Florida's diverse and vibrant economy.
- Additionally, this project would support the goals established by the Northwest Florida Greenway Project, which represents the partnership between military, government, and non-profit organizations for the enhancement of the military mission in Northwest Florida while enhancing the local economy and conserving ecosystems. In addition, investing proactively in centralized public water and sewer is the responsible approach in keeping the environment and water supply sustainable, preempting the installation of thousands of septic tanks and individual water wells spread throughout the area, particularly in the watershed of the Shoal River which traverses across Okaloosa and Santa Rosa Counties before eventually emptying into the Gulf of Mexico in Escambia County.

(v) Project Timeline

- Design of Highway 90 Portion – Complete
- Design of Fairchild Road Portion – 3 months
- Permitting – 3 months
- Material Procurement – 3 months
- Construction – 9 months
- All above durations are approximate

For more information, please contact:

Mark Wise, P.E., Deputy Director, mwise@co.okaloosa.fl.us, 850-685-0297

Okaloosa County Water & Sewer, 1804 Lewis Turner Blvd., Suite 300, Fort Walton Beach, FL 32547