



Southwest Crestview Bypass

Triumph Update



Southwest Crestview Bypass

Overall Location Map





The General Need for Transportation Infrastructure

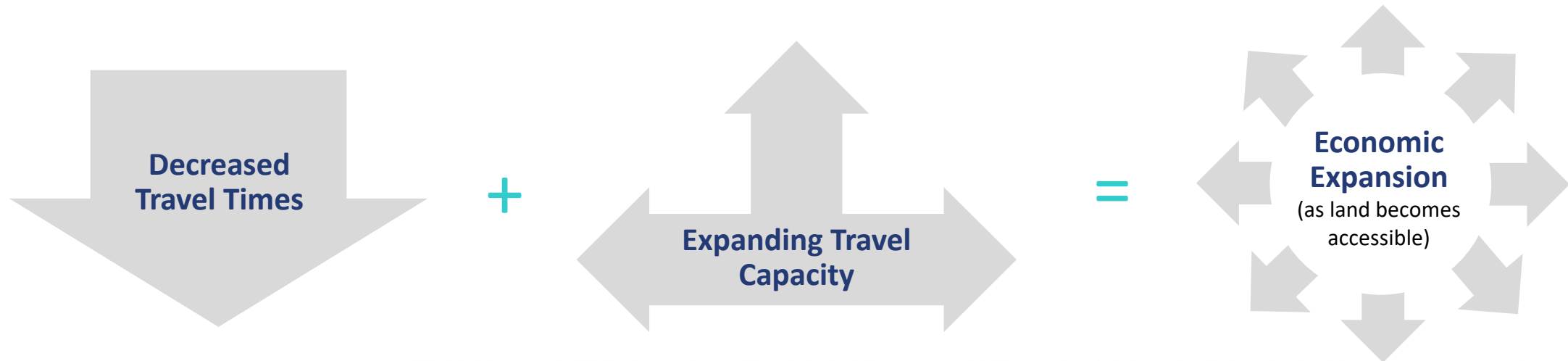
Direct economic impacts of a transportation system:

Efficiency and *costs* of Transportation Infrastructure *directly impact virtually every other good or service* in an economy.

Efficient transportation systems create additional economic opportunities and benefits:

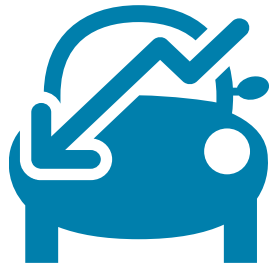
- better accessibility to markets
- employment
- additional investments.

Deficient transportation systems can have *detrimental effects* to an economy through lost jobs, disposable income, and businesses.



Primary Goals of the Project Development

1



Maintaining

existing Regional
Productivity through
congestion reductions

2



Improving

Economic Retention

3



Expanding

Economic Development



Regional Productivity

Increased Economic Benefits of constructing the new corridor and lowering regional transportation costs for businesses and residents include:

Short-Term



\$184M

in 2019 dollars

Long-Term



\$124M

ANNUALLY

in 2019 dollars

Economic Retention

Annual
Compensation*
by Eglin AFB

Direct

\$2.45B

Indirect

\$1.27B

*estimated

directly
employed
by Eglin AFB

26K

contracted
by Eglin AFB

8K

Eglin Air Force Base

*leading
economic
generator for
the entire NW
Florida Region*

**5% Mission Reduction =
2,400 Total Jobs and
\$298M Total Value Lost**



Expanded Economic Development

The Southwest Crestview Bypass will **serve the existing needs** of the County as well as **support anticipated growth**

Economic Enhancement

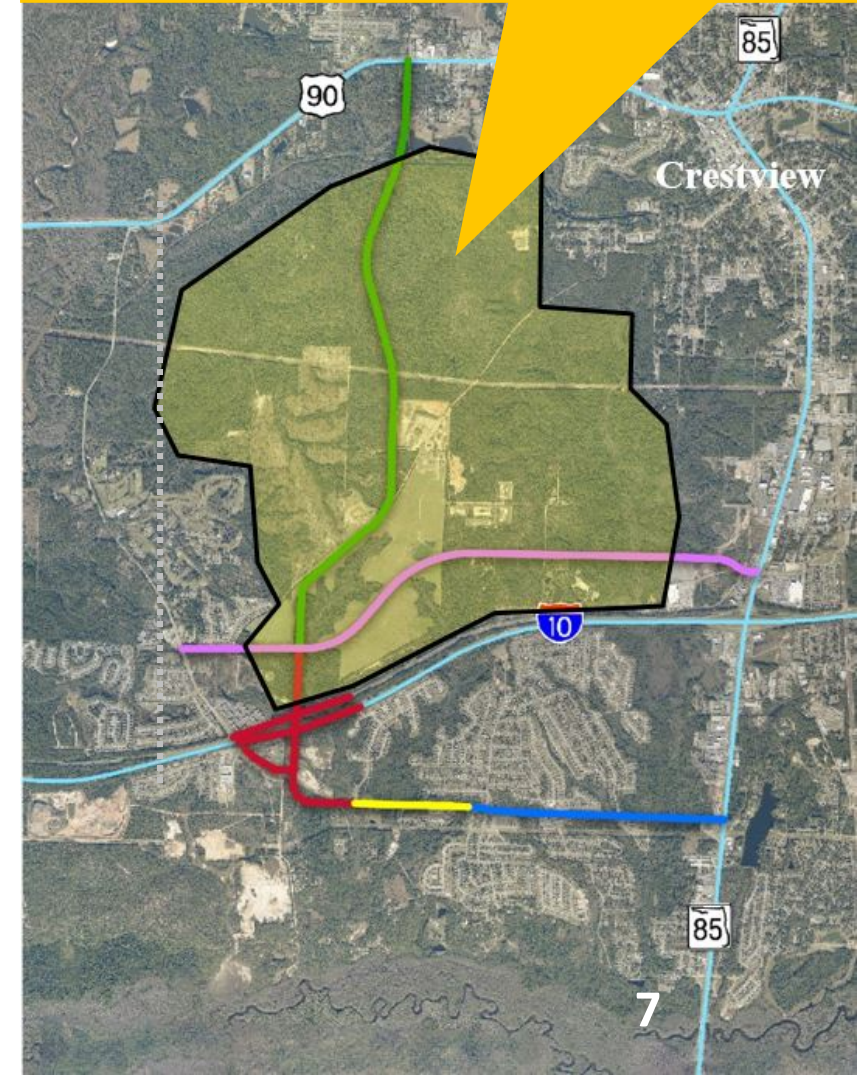
- Greenfield development **creates jobs** during construction.
- **New residential areas induce commercial growth** which will support the new population center.

Potential development areas include:

Commercial Use
125-300
acres

Residential Use
600-1,800
acres

The current roadway network of Crestview encompasses a **large area of undeveloped land**, which is **largely inaccessible from the current roadway network**.



Summary

This funding will allow Okaloosa County and the City of Crestview to:

Continue their



25yrs

of growth while still maintaining critical jobs at Eglin AFB



Maintain their dedication

to improving the Southwest Crestview Bypass corridor

Okaloosa County, City of Crestview, and FDOT:

have long been **engaged in the effort to improve**

the Southwest Crestview Bypass Corridor



Together, have **expended or programmed nearly**



\$135M

toward the development of this project