

FIELD OBSERVATION REPORT

RANDY LEWIS, AIA
Architect / Industry Consultant
211 John Knox Rd. Suite 106
Tallahassee, FL 32303
randylewisaia@gmail.com
(850) 524-2398

PROJECT: PC Port Authority East Terminal Expansion Phase II Const.

OWNER: Panama City Port Authority

REPORT NUMBER: 1

CONTRACTOR: Culpepper Construction, Inc.

ARCHITECT / ENGINEER: Billy Perry PE, Mott Macdonald Engineers

DATE: 2/25/2019 TIME: 1:30 CST

WEATHER: Cloudy

TEMP RANGE: 68-70F

WORK IN PROGRESS: Reinforcing steel for warehouse southeast concrete slab and west end site earthwork

PRESENT AT SITE: Charlie Lewis, and Shelby Husbands, PC Port Authority
Brooks Hayes, Sr. PM and Lee Williams Super., Culpepper Const.
Billy Perry PE, Project Engineer, Mott Macdonald Engineering
Cori Henderson Assist, Director, and Randy Lewis, Consultant, Triumph GC

Site Observation Notes:

Site Preparation

- Majority of earthwork for Phase II const. complete, west end site work for parking, road, and cargo storage pad in progress.

Warehouse (WHSE) Expansion, Phase II:

- About 70% of concrete slab poured, rebar placed for last quadrant pour (SE corner), scheduled this week.
- About 70% of bar joists and 50% rigid frame / girts for Phase II expansion stored on site.

Phase I Const. (NIC Triumph Grant):

- Hurricane damaged WHSE steel frame structure being corrected / plumbed to reinstall new and undamaged bar joists and new roofing and siding, with insurance claims

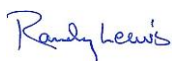
Overview and Misc:

- Billy Perry PE provided reduced Drawing Documents and full Site Plans for the Consultant's use and drove Consultant around site explaining full project scope (Phase I and II, Bulkhead Deepening Project, Cargo Storage Pad, parking areas and future planning) and project progress.
- The Project Engineer reviewed the new seawall bulkhead and steel sheet pile installation, material delivery scheduled to soon.

Observed construction work in place and stored materials are congruent with the February Contract Construction Progress Schedule and the most recent Culpepper Construction Applications for Payment (#18 and #19) and PC Port Authority's Applications for Reimbursement #4 and #5 from Triumph GC. It is Consultant's opinion that the construction project is approximately on schedule (a few days behind due to weather) and the reviewed Pay Applications are acceptable.

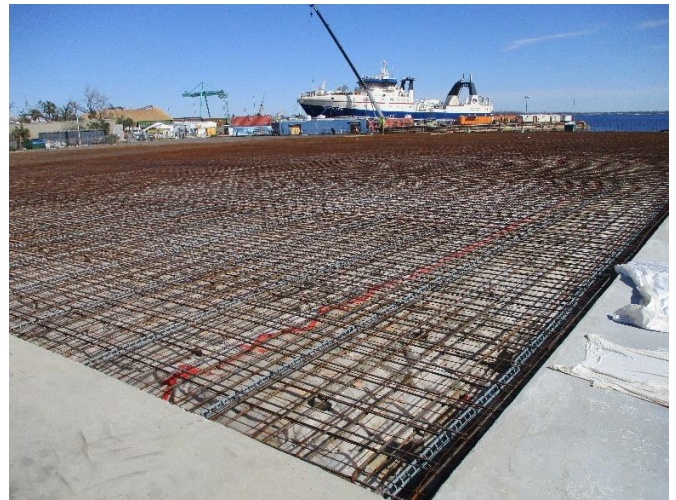
ATTACHMENTS: PHOTOGRAPHS AND COMMENTARY ATTACHED.

BY: Randy Lewis





Phase I Warehouse (WHSE) Frame View West From Entry



Steel Rebar Placed for East Slab Pour For This Week



Steel Rebar Placed for East Slab Looking East



WHSE Exp. Slab Looking West (Plastic Cover for Curing)



WHSE Exp. Slab Looking NW, Phase I to Right



Looking Through WHSE Phase I from Expansion Slab



Phase I Warehouse (WHSE) Frame View West From Entry



Steel Rebar Placed for East Slab Pour For This Week



Steel Rebar Placed for East Slab Looking East



WHSE Exp. Slab Looking West (Plastic Cover for Curing)



WHSE Exp. Bar Jsts. and Steel Girts Stored In Phase I



Earthwork Excavat. & Moving West Side of Site Ext.



Crushing Demo Concrete for Paving Base and Fill



Earthwork Excavat. West Side and Stored Rebar