

Triumph Gulf Coast, Inc.

Application for Funds



County Multi-Purpose Facility to
Serve as a Library, Business Center
and High-Risk Disaster Shelter

“a TRIUMPH Community Hub”

September 23, 2019

***** IMPORTANT *****

Required for ALL Projects in Bay, Franklin, Gulf and Wakulla Counties

Hurricane Michael Application Addendum

For ALL regular project applications not yet approved by the Triumph Gulf Coast Board in Bay, Franklin, Gulf and Wakulla counties

Please provide documentation of support or continued support for the proposal as a component of the county's post-Hurricane Michael recovery efforts made by the Board of County Commissioners (for each Hurricane Michael impacted county included in the project) on a date after October 10, 2018. (See Attachment #1)

Triumph Gulf Coast, Inc. TrustFund Application for Funds

Proposal Instructions: The Triumph Gulf Coast, Inc. Trust Fund Grant Application (this document) must be completed by the entity applying for the grant and signed, as applicable, by either the individual applying for funds, an individual authorized to bind the entity applying for funds, a chief elected official, the administrator for the governmental entity or their designee. Please read the Application carefully as some questions may require a separate narrative to be completed. In addition, please complete all Addendums that may be applicable to the proposed project or program.

Triumph Gulf Coast, Inc. will make awards from available funds to projects or programs that meet the priorities for economic recovery, diversification, and enhancement of the disproportionately affected counties. Triumph Gulf Coast, Inc. may make awards for:

- Ad valorem tax rate reduction within disproportionately affected counties;
- Local match requirements of s. 288.0655 for projects in the disproportionately affected counties;
- Public infrastructure projects for construction, expansion, or maintenance which are shown to enhance economic recovery, diversification, and enhancement of the disproportionately affected counties;
- Grants to local governments in the disproportionately affected counties to establish and maintain equipment and trained personnel for local action plans of response to respond to disasters, such as plans created for the Coastal Impacts Assistance Program;
- Grants to support programs that prepare students for future occupations and careers at K-20 institutions that have campuses in the disproportionately affected counties. Eligible programs include those that increase students' technology skills and knowledge; encourage industry certifications; provide rigorous, alternative pathways for students to meet high school graduation requirements; strengthen career readiness initiatives; fund high-demand programs of emphasis at the bachelor's and master's level designated by the Board of Governors; and, similar to or the same as talent retention programs created by the Chancellor of the State University System and the Commission of Education; encourage students with interest or aptitude for science, technology, engineering, mathematics, and medical disciplines to pursue postsecondary education at a state university or a Florida College System institution within the disproportionately affected counties;
- Grants to support programs that provide participants in the disproportionately affected counties with transferable, sustainable workforce skills that are not confined to a single employer; and
- Grants to the tourism entity created under s. 288.1226 for the purpose of advertising and promoting tourism and Fresh From Florida, and grants to promote workforce and infrastructure, on behalf of all of the disproportionately affected counties.

Pursuant to Florida Law, Triumph Gulf Coast, Inc. will provide priority consideration to Applications for projects or programs that:

- Generate maximum estimated economic benefits, based on tools and models not generally employed by economic input-output analyses, including cost-benefit, return-on-investment, or dynamic scoring techniques to determine how the long-term economic growth potential of the disproportionately affected counties may be enhanced by the investment.
- Increase household income in the disproportionately affected counties above national average household income.
- Leverage or further enhance key regional assets, including educational institutions, research facilities, and military bases.
- Partner with local governments to provide funds, infrastructure, land, or other assistance for the project.
- Benefit the environment, in addition to the economy.
Provide outcome measures.
- Partner with K-20 educational institutions or school districts located within the disproportionately affected counties as of January 1, 2017.
- Are recommended by the board of county commissioners of the county in which the project or program will be located.
- Partner with convention and visitor bureaus, tourist development councils, or chambers of commerce located within the disproportionately affected counties.

Additionally, the Board of Triumph Gulf Coast, Inc. may provide discretionary priority to consideration of Applications for projects and programs that:

- Are considered transformational for the future of the Northwest Florida region.
May be consummated quickly and efficiently.
- Promote net-new jobs in the private sector with an income above regional average household income.
- Align with Northwest Florida FORWARD, the regional strategic initiative for Northwest Florida economic transformation.
- Create net-new jobs in targeted industries to include: aerospace and defense, financial services/shared services, water transportation, artificial intelligence, cybersecurity, information technology, manufacturing, and robotics.
- Promote industry cluster impact for unique targeted industries.
- Create net-new jobs with wages above national average wage (*e.g.*, similar to EFI QTI program, measured on graduated scale).
- Are located in Rural Area of Opportunity as defined by the State of Florida (DEO).
Provide a wider regional impact versus solely local impact.
- Align with other similar programs across the regions for greater regional impact, and not be duplicative of other existing projects or programs.
- Enhance research and innovative technologies in the region.
- Enhance a targeted industry cluster or create a Center of Excellence unique to Northwest

Florida.

- Create a unique asset in the region that can be leveraged for regional growth of targeted industries.
- Demonstrate long-term financial sustainability following Triumph Gulf Coast, Inc. funding.
- Leverage funding from other government and private entity sources.
Provide local investment and spending.
- Are supported by more than one governmental entity and/or private sector companies, in particular proposed projects or programs supported by more than one county in the region.
- Provide clear performance metrics over duration of project or program.
- Include deliverables-based payment system dependent upon achievement of interim performance metrics.
- Provide capacity building support for regional economic growth.
Are environmentally conscious and business focused.
- Include Applicant and selected partners/vendors located in Northwest Florida.

Applications will be evaluated and scored based on compliance with the statutory requirements of the Triumph Gulf Coast legislation, including but not limited to the priorities identified therein and the geographic region served by the proposed project or program

Applicant Information:

Name of Entity/Organization: Wakulla County Board of County Commissioners (Board)

Background of Applicant: Local Government – Charter County

Federal Employer Identification Number: 59-6031875

Contact Information:

Primary Contact Information: Sheree T. Keeler

Title: Director of Intergovernmental Affairs, Wakulla County Board

Mailing Address: P.O. Box 1263, Crawfordville, FL 32327

Phone: 850-926-0919 X 705

E-mail: SKeeler@mywakulla.com

Website: www.mywakulla.com

- ✓ Co-applicants, partners, or other entities or organizations having a role in the proposed project or program: None
- ✓ Total amount of funding requested from Triumph Gulf Coast: \$ 9,625,148.00
- ✓ Has the applicant in the past requested or applied for funds for all or part of the proposed project: YES, see below:
 - FY 2017, and 2018 Legislative Local Funding Request seeking funding assistance in the amount of \$2,000,000.00 for the Library component only. Did not receive funding.
 - FY 2019 Legislative Local Funding Requesting seeking funding assistance in the amount of \$3,500,000.00 for both the Library and High-Risk Disaster Shelter components. Did not receive funding.
- ✓ Describe the financial status of the applicant/co-applicants: See Attachment 2: FY 2017-18 Audited Financial Statements.
- ✓ Has the applicant or any co-applicants, etc., filed for bankruptcy in the past ten years? No.

Eligibility

Pursuant to Section 288.8017, Triumph Gulf Coast, Inc. was created to make awards from available funds to projects or programs that meet the priorities for economic recovery, diversification, and enhancement of the disproportionately affected counties (i.e., Bay, Escambia, Franklin, Gulf, Okaloosa Santa Rosa, Walton or Wakulla County). See section 288.08102, F.S.

1. From the choices below, please check the box that describes the purpose of the proposed project or program (check all that apply):

- Ad valorem tax rate reduction within disproportionately affected counties;
- Local match requirements of s. 288.0655 for projects in the disproportionately affected counties;
- Public infrastructure projects for construction, expansion, or maintenance which are shown to enhance economic recovery, diversification, and enhancement of the disproportionately affected counties;
- Grants to local governments in the disproportionately affected counties to establish and maintain equipment and trained personnel for local action plans of response to respond to disasters, such as plans created for the Coastal Impacts Assistance Program;
- Grants to support programs that prepare students for future occupations and careers at K-20 institutions that have campuses in the disproportionately affected counties. Eligible programs include those that increase students' technology skills and knowledge; encourage industry certifications; provide rigorous, alternative pathways for students to meet high school graduation requirements; strengthen career readiness initiatives; fund high-demand programs of emphasis at the bachelor's and master's level designated by the Board of Governors; and, similar to or the same as talent retention programs created by the Chancellor of the State University System and the Commission of Education, encourage students with interest or aptitude for science, technology, engineering, mathematics, and medical disciplines to pursue postsecondary education at a state university or a Florida College System institution within the disproportionately affected counties; Grants to support programs that provide participants in the disproportionately affected counties with transferable, sustainable workforce skills that are not confined to a single employer; and
- Grants to the tourism entity created under s. 288.1226 for the purpose of advertising and promoting tourism and Fresh from Florida, and grants to promote workforce and infrastructure, on behalf of all of the disproportionately affected counties.

2. Provide the title and a detailed description of the proposed project or program, including the location of the proposed project or program, a detailed description of, and quantitative evidence demonstrating how the proposed project or program will promote economic recovery, diversification, and enhancement of the disproportionately affected counties, a proposed timeline for the proposed project or program, and the disproportionately affected counties that will be impacted by the proposed project or program.

PROJECT TITLE: New Multi-Purpose Facility the “Triumph Community Hub”

PROJECT SUMMARY

Wakulla County is seeking \$9,625,148 from its allocation of Triumph funding to construct an 18,950 square foot multi-purpose facility to serve primarily as a County public library. The facility will be constructed to withstand up to a Category 4-5 hurricane providing approximately 7,187 square feet of interior space for a “high risk shelter” to shelter up to 359 persons, allowing 20-22 square feet per person. Separate space in the facility will be designated and dedicated as a small business center.

The proposed new facility will be constructed on County-owned property where the existing Wakulla Community Center is located in the Crawfordville area at the intersection of Trice Lane and Shadeville Road (CR 61). The Community Center property is a 22-acre parcel in Crawfordville and is centrally located in Wakulla County with easy access from US 98 and US 319. Constructing the multi-purpose facility on this parcel will create a “**Triumph Community Hub**” providing families, youth, adults, businesses, entrepreneurs and visitors with easy access to multiple County services, programs, resources and disaster sheltering as well as connectivity to pedestrian paths, retailers, food establishments, medical services and other businesses in the Crawfordville area.

It is anticipated that this project will take up to 36 months from the date of an award before the new multi-purpose facility is placed in service. The project requires architectural services for the facility design; engineering services for property site development needs, permitting and construction oversight; construction cost; furnishings; and, one-time start-up operational costs. The County has not budgeted nor received any other funds for this project therefore it does not supplant other funding.

The County feels this project is an allowable use of Triumph funds for the following two Triumph priorities, which are explained further in this application where applicable:

- *Public Infrastructure projects for construction, expansion, or maintenance which are shown to enhance economic recovery, diversification, and enhancement of the disproportionately affected counties.*
- *Grants to local governments in the disproportionately affected counties to establish and maintain equipment and trained personnel for local action plans of response to respond to disaster, such as plan created for the Coastal Impacts Assistance Program.*

This project leverages and enhances key County assets, as discussed in this application, having a regional impact and provides a model concept that can be replicated in other counties. The small business center component provides a capacity building support element for small business beyond the 8-county region.

The Wakulla County Board of County Commissioners (BoCC) submitted a pre-application seeking \$9,625,148.00 in Triumph funds. The preapplication was subsequently approved by Triumph to move forward with the submittal of a full application (Attachment #3).

OVERVIEW

Wakulla County is a designated area of Rural Area of Opportunity (RAO) and one of the eight disproportionately effected counties named in the RESTORE Act of 2012, as being impacted by the 2010 Deepwater Horizon event.

In 1990, the County's population was just over 14,000 residents and over the last twenty years the population has more than doubled with an estimated population today of 30,776. In 2000, the County had an estimated 37.7 persons per square mile, that number is now estimated at 52.7 persons per square mile; an increase of almost 30% per square mile. Wakulla County's population is projected to increase by 7.2% by 2025; or, increase to an estimated population of 35,458. (*Source: Wakulla County Profile prepared by the Florida Legislature's Office of Economic and Demographic Research, March 2019.*)

Wakulla County is a bedroom community to Leon County with at least 60% of the residents commuting daily to Leon County for employment, medical services, entertainment, shopping, sporting and cultural events. The County also serves as a pass-through for those traveling US 98/US 319 to other counties and beaches to the west. An estimated 75% of the County is comprised of local, state or national lands, forests and parks. In fact, a majority of the County's northern, western and eastern boundaries are bordered by either the Wakulla State Forest, the St. Marks National Wildlife Refuge or the Apalachicola National Forest and the southern boundary is bordered by the Apalachee, Ochlockonee and Levy bays.

Wakulla County is steadily attracting new residents with its unique offering of outdoor recreational opportunities, natural resources, quality schools and close proximity to Leon County, which is reflected by its growth in population, small retail/service sector and residential development projects over the last decade. However, with that growth comes a demand for public services, essential public safety services, access to technology, infrastructure, cultural and entertainment opportunities and other ideas associated with a quality of life community in which to live and work.

Hindering the County's ability to attract businesses, other than food/personal services or small retailers, is a lack of high-speed internet, turnkey facilities, high-risk disaster shelters and easy access to airports, interstates or deep-water ports. Wakulla County cannot compete with large metropolitan areas; Gulf Coast counties with white, sandy beaches and a transportation network; or, upland counties with easy access to I-10. Nor can Wakulla County continue to depend on its rural quality of life, natural resources and day visitors to sustain its economy any longer. Wakulla County must diversify, offer and provide services, programs, technology and facilities that are not just attractive or desired but, are essential and in demand for today's business and educational climate. If Wakulla does not transform itself to meet these demands, it cannot sustain its current economy nor can it compete with other areas that are meeting these demands.

Communities such as Wakulla also need adequate shelter for housing citizens/visitors and keeping them safe during disaster events. The consequences are severe if a community lacks adequate disaster shelter. Lack of shelter can escalate critical situations when citizens/visitors are faced with eminent danger before and during an event as well as post disaster recovery.

Many can be left homeless, jobless and unable to care for themselves or their families. Shelters and trained staff are necessary to manage and prevent crisis situations, especially for the most vulnerable before, during and after a disaster event.

Building A Vibrant Triumph Community Hub: Wakulla County can however begin to transform itself by providing a dynamic community hub for families, individuals, businesses, and entrepreneurs looking for that smaller, rural setting with current technological amenities with close access to airports, interstates, or larger cities, such as Tallahassee. The County has the perfect property to begin its transformation by using Triumph funds, allocated to Wakulla County, to construct a multi-purpose facility at its Community Center property to create a Triumph Community Hub (Hub).

The Community Center property is centrally located in Wakulla County at the intersection of Trice Lane and Shadeville Road (CR 61) in Crawfordville. The 22-acre parcel is owned by the County and includes a 26,000 +/- square foot building with a current assessed value in excess of \$1 million. The existing facility provides a large meeting/event space and several small meeting rooms, offices and full kitchen. These rooms are rented out to the public or used for County services/programs. In 2012-13 the County constructed a multi-purpose gymnasium (which can serve as post-disaster shelter to meet longer term housing needs); and, in 2017-18 the County was awarded a FRDAP grant for construction of a new playground, basketball half-court, and other outdoor amenities.

The Community Center can be easily accessed from either U.S 319 or US 98. Pedestrian paths from schools, businesses and residential areas are either constructed or planned. It is located across the street from the County's Trice Lane Fire/EMS station allowing for quick access to emergency services.

A new multi-purpose facility will provide traditional and non-traditional library services, programs, amenities and highspeed internet; provide a much-needed small business center; and, serve as a high-risk shelter as needed. A new, centrally located multi-purpose facility will also connect families, individuals, businesses and entrepreneurs with other services and programs offered at the Community Center property and the Crawfordville area. It also allows the County to centralize its efforts and resources for efficient and economical service delivery.

The vision of a transformational "Triumph Community Hub" can only be accomplished with Triumph funding. The Hub will provide a myriad of services, programs and resources in one location as well as connectivity to pedestrian paths, retailers, food establishments and businesses in the Crawfordville town area. It will help bridge the gap in high-speed and cellular services experienced in rural communities by offering such services at one central location.

In November 2017, the Wakulla County Board approved a conceptual plan for enhancing and improving the Community Center property to create a vibrant community hub (see Attachment #4). A new Library facility is also included in the County's 2017 Adopted Infrastructure Plan, which is incorporated into the County's Capital Improvement Plan (see Attachment #5).

PROJECT DETAIL

I. Overview -Wakulla County is seeking up to \$9,625,148.00 from its allocation of Triumph funding to construct an 18,950 square foot multi-purpose facility that if funded will serve primarily as a County public library. The facility will be constructed to withstand up to a Category 4-5 hurricane providing approximately 7,187 square feet of interior space for a “high risk shelter” to shelter for up to 359 persons, allowing 20-22 square feet per person. Separate space in the multi-purpose facility will be designated and dedicated as a small business center.

II. Present Situation

A. Library Component - Libraries are gateways to knowledge and exist around the world playing an important role in the community for adults and youth, whether they are a resident or visitor, seeking historical or local information, computer access, books, newspapers, magazines, meeting space, events, activities, etc. In rural areas, libraries are an integral community hub providing a neutral, friendly cultural center where residents and visitors can gather to get access to information on current events, activities and services offered in the community, especially for the underserved and the most vulnerable populations; gain computer access; attend classes and programs not elsewhere offered; as well as, a myriad of other opportunities that contribute to a quality place to live and work.

A strong, vibrant Library is an asset to the community and supports economic, educational and personal growth through the provision of services, programs and resources that are expected and demanded by current and future residents. Libraries are not just about checking out a book, they are an essential cultural, community and business center and partner!

According to Todd Frager, CFO and COO Library Systems and Services, “Libraries have long been community anchors for learning and enrichment. Today, with the right leadership, libraries are evolving into springboards for economic and workforce development. They play an even larger role as more services are offered outside library walls – both physically and virtually, a strong partnership is formed with businesses and education and co-location with other community services. Libraries have the power to be one of the most valuable community assets.

History of Wakulla County’s Public Library: The first Library was established in Crawfordville across from the current Courthouse and was later relocated to the Old Courthouse where it stayed until 1996. The Library that we know today is the amazing result of concerned civic groups, individuals and businesses. In 1995, the Friends of the Library continued to lead the effort to improve literacy that resulted in the BoCC purchasing the land and concrete block building in the Medart community that is the present site of the Library. The existing concrete building was renovated and remodeled with a combination of donations raised by the Friends of the Library and state grant funds.

The County has further renovated and improved energy efficiency of the Library over the last five years with County funds and an energy grant from the Florida Department of Agriculture.

Wakulla County continues to operate the one public library today located in the Medart Community at 4330 Crawfordville Highway (US 319), just south of Crawfordville. The current concrete block facility has an estimated 16,000 square feet on 2.890 acres. The Library serves Wakulla County residents and visitors to Wakulla County. There are no branch libraries but a book mobile travels to Panacea, St. Marks and Sopchoppy to provide limited library services, and there is book drop off located at Azalea Park in Crawfordville.

The County's current Library is a dynamic hub, continually evolving with programs, activities and resources. Even with its current space and location it is able to provide a myriad of library sponsored events and programs that are innovative, educational and fun. The Library grounds offer visitors a teaching/community garden complete with a chicken coop and several chickens.

However, current Library space and location is inadequate for the County's growing population and demand for services, especially computer access and high-speed internet. Participation in programs and activities is normally on a first come, first serve basis. Its location along US 319 in the Medart Community is a less than desirable location with its heavy traffic patterns continuously along US 319. Furthermore, the existing Library cannot accommodate a business center, it is not constructed as a high-risk disaster shelter, nor is it located close to schools, residential areas, sidewalks or bike paths, and other County services and businesses.

Governance: The Wakulla County Library Director reports to the County Administrator. Policy, programs and services for the Library are recommended by the Library Director, who also implements and carries out new policies, programs and services. This governance structure will not change with a new multi-purpose facility. However, specific functions of the Library may fall under the jurisdiction of other County employees or NGOs for special operations, such as activating the Library as a High-Risk Shelter as discussed below.

Partners and Volunteers: The Friends of the Wakulla County Public Library organization was chartered in 1976. Through fundraisers and donations, the Friends have been able to relocate and enlarge library facilities, and add thousands of books, videos and audiobooks to current collections. The Friends also sponsor the Library's annual Summer Reading Program. The Library uses volunteers of all ages in a myriad of ways, from shelving to book processing. Wakulla County's native plant society and garden club utilize the facility. Young volunteers can use their hours to help qualify for Bright Futures Scholarships.

Performance Metrics: As the County's population has grown, so has the demand for current, modern library services and programs. In 2016, the Library identified important performance metrics and began collecting data annually to assess its performance and

value to the community. Table one below presents 2016 actual results compared to 2018 and indicates an increase in almost every metric. Performance metrics that indicate a decrease are contributable to people not visiting due to crowded classes or long waits for computer access. It is obvious that the Library is also reaching almost one-third of the County's population based on the number of registered users.

TABLE 1: Performance Measure	ACTUAL			
	2016	2018	Increase/ Decrease	Percent Change
Registered Users	8,299	10,197	1,898	22.87%
Print Book Collection	33,639	36,753	3,114	9.26%
e-book Collection	9,048	8,725	-323	-3.57%
Audio Book Collection	1,285	2,777	1,492	116.11%
Video Collection	1,883	2,554	671	35.63%
Circulation of Adult Materials	46,799	46,088	-711	-1.52%
Circulation of Youth Materials	19,863	22,487	2,624	13.21%
Total Annual Circulation	66,662	68,575	1,913	2.87%
Library Visits	53,530	94,237	40,707	76.05%
Adult Programs	612	671	59	9.64%
Young Adult Programs	39	36	-3	-7.69%
Children's Programs	227	280	53	23.35%
Total Number of Programs	878	987	109	12.41%
Adult Attendance	5,777	5,871	94	1.63%
Young Adult Attendance	370	286	-84	-22.70%
Children's Attendance	5,707	7,934	2,227	39.02%
Total Attendance	11,854	14,091	2,237	18.87%
Number of Computers w/ Internet Access	32	32	0	0.00%
Wireless Sessions Per Year	6,409	6,314	-95	-1.48%
Annual Number of Users - Public Internet	9,312	8,036	-1,276	-13.70%

Table 2 below presents a complete list of FY 2017-18 activities, meetings, and frequency of each with total annual attendance:

Table 2: Activity, Program, Meeting	Frequency	Attendance
Youth		
▪ Story Time in the Park.	Annually	350
▪ Trick O Treat Trail	Annually	5,000
▪ Dr. Seuss Birthday Party	Annually	68
▪ Star Wars – May 4 th	Annually	53
▪ Talk Like a Pirate Day	Annually	42
▪ Harry Potter’s Birthday	Annually	56
▪ Grinchmas	Annually	47
▪ Bring Your Child to the Library	Annually	72
▪ Animal Tales Christmas	Annually	50
▪ Storytime with Santa	Annually	35
▪ Peeps Roast/Contest	Annually	40
▪ Book Brunch Tuesday	Weekly	960
▪ Book Babies Wednesday	Weekly	720
▪ Girl Scout Troup 178 Wednesday	Weekly	240
▪ Cub Scouts Pac 5 Monday	Weekly	300
Young Adults		
▪ Tally Mo-Lab	Annually	96
▪ Escape the Library Night	Annually	26
▪ TMH Read – Therapy Dogs	Monthly	96
▪ Kid’s Coding	Weekly	248
▪ 51 Summer Programs	Weekly June-August	1,702
▪ STEAM	Bi-Weekly	200
▪ Lego Club	Bi-Weekly	480
Adults		
▪ Eagle Scout Board	Monthly	78
▪ Wakulla Democrat Executive Committee	Monthly	360
▪ Woodman Life Chapter 168	Monthly	302
▪ Historical Society	Monthly	450
▪ Native Plant Society	Monthly	462
▪ Women’s Support Group	Monthly	95
▪ Wakulla Amateur Radio	Monthly	82
▪ Sons of Confederate Vets	Monthly	264
▪ Wakulla One	Monthly	432
▪ NAACP	Monthly	216
▪ Basics of Better Living	Monthly	103
▪ Operation Wakulla	Monthly	96
▪ Autism Support	Monthly	106
▪ Quilting	Weekly	288
▪ Knitting	Weekly	292
▪ Book Club	Weekly	576
▪ Coffee, Craft and Chat	Bi-Weekly	101
▪ Wakulla Christian Coalition	Bi-Weekly	144
▪ Creative Writing	Bi-Weekly	111
▪ Tobacco Free	Bi-Weekly	106
▪ Bible Study	Bi-Weekly	104
▪ Alzheimer’s Caregiver	Bi-Weekly	242
▪ Parenting Classes	2-month program	240
▪ Tax Aide	Feb 1- April 15	480
▪ Computer Classes	Weekly Feb-May	192
All Ages		
▪ Teaching Garden	Continual	365
▪ Movie Night	Bi-Weekly	528

Operational Budget and Staff: The Library currently has 6 full-time and 1 part-time staff, inclusive of the full-time Library Director. Salaries and benefits and operational costs are funded from County general revenue dollars. Library circulation material and materials/supplies for some programs and services are funded almost 100 percent with legislative grants and donations appropriated to the Florida Department of State, Division of Library Services. Capital purchases and improvements are funded from other County funds. Below is a summary of the actual 2018-19 and proposed 2019-20 budget.

	ACTUAL 2018-19	PROPOSED 2019-20
Salaries and Benefits		
General Fund	\$ 323,265.00	\$ 335,446.00
State Aide	\$ -	\$ -
Impact Fees	\$ -	\$ -
sub-total	\$ 323,265.00	\$ 335,446.00
Expenses		
General Fund	\$ 15,000.00	\$ 23,400.00
State Aide*	\$ 96,684.00	\$ 96,618.00
Impact Fees	\$ -	\$ -
sub-total	\$ 111,684.00	\$ 120,018.00
Capital Outlay		
General Fund	\$ -	\$ -
State Aide	\$ -	\$ -
Impact Fees	\$ 18,943.00	\$ 18,943.00
sub-total	\$ 18,943.00	\$ 18,943.00
TOTAL BUDGET		
ALL CAT/FUNDS	\$ 453,892.00	\$ 474,407.00

**The County cannot charge for any services funded by state library grants.*

B. High-Risk Shelter Component – The 2018 Statewide Emergency Shelter Plan (Shelter Plan), prepared by the Department of Emergency Management, states that Wakulla County currently has two schools that function as shelters with the capacity of sheltering a total of up to 800 people, which are the Crawfordville Elementary School with a capacity for 400 people and the Riversink Elementary School with a capacity for 400 people. The Shelter Plan further states that the County has a shelter deficit and the facilities are not constructed to withstand a Category 4 or above event.

The Riversink Elementary School is not used as a shelter since it is located in FEMA Flood Zone A, which is vulnerable to flooding during moderate to heavy rains. Therefore, the State advised the County that it will be removed in the planned 2020 update to the Shelter Plan. This further increases the County's shelter deficient by at least 50 percent and further

justifies why the County is in need of a centrally located, “high-risk” shelter. The Wakulla County Community Center property is not in a FEMA flood zone area, nor are there wetlands or floodplains on or near the property.

A lack of shelter or inadequate shelter will create serious hazards and risks for citizens and first responders. As discussed earlier not having adequate shelter can escalate a situation to crisis level and leave citizens homeless.

C. Business Center Component – Wakulla County does not have a dedicated business center where small business owners, entrepreneurs or those working from home can meet or have access to high speed internet, conference rooms or other business services.

III. Proposed Functionality of the Multi-Purpose Facility

Provided below is an explanation of the functionality for each component of the proposed multi-purpose facility. A descriptive architectural drawing and preliminary building specification is included as Attachment 6.

A. Library Component - In summary, library space in the new proposed facility is allocated as follows:

- ***Books and Reading Area, which will serve as the High-Risk Shelter*** - The largest area is the Books and Reading area, approximately 7,413 square feet of space for shelving, reading areas, books, DVDs, audiobooks and other resources commonly found at libraries. Using mobile shelving in this area will allow the County to quickly move shelves out of this area when the Library is activated as a High-Risk Shelter.
- ***Children’s Section*** – This area is a dedicated space of approximately 1,359 square feet with appropriate furnishings for programs, activities and reading focused on children from birth to elementary school age. It will house all age appropriate furnishings and resources, such as picture books and easy readers as well as “parent” space and furnishings.
- ***Coffee Shop*** – The County will seek interested individuals and businesses to set-up and run a small coffee shop, approximately 266 square feet.
- ***Computer Area*** – This space will provide access to computer, high-speed internet, and printers. Approximate size 220 square feet.
- ***Computer Training Area*** – This 498 square foot room, next to the Business Center, will be dedicated to computer training, meetings requiring computer access, and other purposes where computer access for a group or individuals may be needed.
- ***Conference Rooms*** – The Library will include 4,580 square feet of dedicated meeting space: One 524 square foot; one 1,285 square foot; and, one 2,771 square foot.
- ***Quiet Room*** - This space will provide an additional 432 square feet of space dedicated for

reading or studying. This room will not include any computers but will have Wi-Fi.

- **Reception and Office Space** - At least 2,594 square feet will be dedicated to space for Library staff, which includes the reception area, 5 offices, common workspace, restroom/lockers, and a breakroom.
- **Teen Section** – This area will provide a dedicated space of approximately 694 square feet and appropriate furnishings for programs, activities and reading focused on teens. This area will house all young adult reading materials and provide a comfortable, safe space with Wi-Fi.

Partners and Volunteers - Partners and volunteers will continue to be utilized and will be expanded to include business partners such as the Wakulla County Chamber of Commerce or Career Source for the business center operations.

- B. High Risk Shelter Component:** The proposed design of the multi-purpose facility will be constructed to withstand up to a Category 4-5 event with appropriate circulation space, restrooms, back-up generator, etc. All library books, periodicals, reference material, etc. will be housed in the center area of the facility and stored on mobile book shelving. The mobile book shelving and modular furnishings can easily be moved and stored allowing for the interior space to be converted into a disaster shelter. The Wakulla County Sheriff's Office, Emergency Management Office, the American Red Cross and others will be engaged when it is essential to activate, furnish and staff the Library as a disaster shelter.
- C. Small Business Center Component:** One of the biggest complaints from rural small businesses, telecommuters and entrepreneurs is the lack of highspeed internet and a centrally located community space for tele/video conferencing, live streaming, workshops, workspace and other furnishings that may be needed for the successes of these groups. The purpose of the small business center is to address small business and individual business needs, foster business development, retainage and expansion as well as job creation. At a minimum 352 square feet will be dedicated to the Triumph Small Business Center. The small business center will include computer access, high-speed internet, video conference and furnishings. The small business center space will be strategically located next to the computer training room, periodicals and quiet room.

The County will seek partnership agreements with individuals or businesses (e.g., the Domi Center) wishing to have priority use of the business center for a small fee. The County will work closely with TCC, Career Source and the Wakulla County School Board to identify classes, certifications, and non-traditional educational programs/trainings that can be offered at the Business Center and/or the Computer Training room. The Library will also work with these groups to identify books, periodicals and other resources for circulation.

3. ***Explain how is the proposed project or program is considered transformational and how it will effect the disproportionately affected counties in the next ten (10) years?***

This project will allow Wakulla County and other nearby counties to transform by creating and providing the first Triumph Community Hub. It addresses small county, multiple community, individual and small business needs in one central location. The multi-purpose facility will be designed so that it can be easily expanded to accommodate a growing population and the demand for services, programs and access to technology. The consolidation of shelter, services and resources at one location will allow the County to provide more services that address public safety needs and foster economic development, job creation and personal growth opportunities. It will also allow the County to be more effective and efficient at service delivery, especially by addressing disaster shelter needs. Furthermore, the shelter component will aid in providing refuge to Franklin County evacuees and others in other adjacent counties as well, making it more regionally significant.

The County anticipates the following success over the next ten years based on the Apalachee Regional Planning County (APRC), REMI Economic Summary for this project (see Attachment #7):

- Total New Jobs Created Either Direct or Indirectly: 29
- Increase in Disposable Income (current dollar): \$16,630 per household
- Increase in County GDP (fixed 2009 dollars): \$2.25 million

4. ***Describe data or information available to demonstrate the viability of the proposed project or program.***

See 3 above.

5. ***Describe how the impacts to the disproportionately affected counties will be measured long term.***

The overall impact will be measured based on total new jobs added either directly or indirectly, increase in disposable income and increases in Wakulla County's GDP based on current REMI model baseline data (as discussed in Section 3 above) to confirm success or determine necessary adjustments. Furthermore, the County will continue to monitor success of each individual component of the proposed facility as discussed in Section 7 below.

6. ***Describe how the proposed project or program is sustainable. (NOTE: Sustainable means how the proposed project or program will remain financially viable and continue to perform in the long-term after Triumph Gulf Coast, Inc. funding.)***

Wakulla County will continue to fund staff, upkeep, maintenance and other operational costs for the proposed multi-purpose facility as it does for the existing Library and other facilities/property. The County will also continue to seek grants, donations and partnerships to help fund improvements, resource materials, programs, training, etc.

The County will convert the existing Library facility located on US 319 into a consolidated EMS/Fire Rescue station.

7. *Describe how the deliverables for the proposed project or program will be measured.*

Performance Metrics

Library: If a new centrally, located multi-purpose facility with adequate space and furnishings is funded by Triumph it is estimated that each performance metric will increase by 5% annually over 2018 actual performance. Below represents the anticipated performance from 2019-2023.

Performance Metrics	ACTUAL	PROJECTIONS - 5% INCREASE ANNUALLY OVER 2018				
	2018	2019	2020	2021	2022	2023
<i>Registered Users</i>	10,197	10,707	11,242	11,804	12,395	13,014
Print Book Collection	36,753	38,591	40,520	42,546	44,674	46,907
e-book Collection	8,725	9,161	9,619	10,100	10,605	11,136
Audio Book Collection	2,777	2,916	3,062	3,215	3,375	3,544
Video Collection	2,554	2,682	2,816	2,957	3,104	3,260
Circulation of Adult Materials	46,088	48,392	50,812	53,353	56,020	58,821
Circulation of Youth Materials	22,487	23,611	24,792	26,032	27,333	28,700
Total Annual Circulation	68,575	72,004	75,604	79,384	83,353	87,521
Library Visits	94,237	98,949	103,896	109,091	114,546	120,273
Adult Programs	671	705	740	777	816	856
Young Adult Programs	36	38	40	42	44	46
Children's Programs	280	294	309	324	340	357
Total Number of Programs	987	1,036	1,088	1,143	1,200	1,260
Adult Attendance	5,871	6,165	6,473	6,796	7,136	7,493
Young Adult Attendance	286	300	315	331	348	365
Children's Attendance	7,934	8,331	8,747	9,185	9,644	10,126
Total Attendance	14,091	14,796	15,535	16,312	17,128	17,984
Number of Computers w/ Internet Access	32	34	35	37	39	41
Wireless Sessions Per Year	6,314	6,630	6,961	7,309	7,675	8,058
Annual Number of Users - Public Internet	8,036	8,438	8,860	9,303	9,768	10,256

Business Center: The County does not currently operate a Business Center and does not have a baseline. Therefore, the following measures will be used for year one of operation and adjusted accordingly after the first year.

Number of Users: 25 annually

Number of Business Training Events: 4 annually

Number of Business Partners/Agreement: 4 Annually

Shelter: The County does not currently operate a high-risk Shelter and does not have a baseline. Therefore, the following measures at a minimum will be used for year one (or the first event if after year one) and adjusted accordingly after the first event:

1. When the Shelter is Activated for a Major Event

Number of Citizens Housed Per Event: no less than 100

Number of Citizens Assisted Per Event: no less than 500

2. On-going Annual Disaster Preparedness and Recovery Training

Number of Training Events: 4 per year

Number of Participants: 25 per training event or a total of 100

PRIORITIES

1. Please check the box if the proposed project or program will meet any of the following priorities (check all that apply).

Generate maximum estimated economic benefits, based on tools and models not generally employed by economic input-output analyses, including cost-benefit, return-on-investment, or dynamic scoring techniques to determine how the long-term economic growth potential of the disproportionately affected counties may be enhanced by the investment.

Increase household income in the disproportionately affected counties above national average household income.

Leverage or further enhance key regional assets, including educational institutions, research facilities, and military bases.

Partner with local governments to provide funds, infrastructure, land, or other assistance for the project.

Benefit the environment, in addition to the economy.

Provide outcome measures.

Partner with K-20 educational institutions or school districts located within the disproportionately affected counties as of January 1, 2017.

Are recommended by the board of county commissioners of the county in which the project or program will be located.

Partner with convention and visitor bureaus, tourist development councils, or chambers of commerce located within the disproportionately affected counties.

2. ***Explain how the proposed project meets the priorities identified above.***

The project is leveraging the existing Community Center site which provides county owned property, in the perfect location for this project. The County will continue to fund operations and maintenance, provide staff and use existing furnishings to the extent possible. Each element of this project provides performance measures and the County will establish new measures or adjust outcomes as needed to ensure success of this project if funded.

3. ***Please explain how the proposed project or program meets the discretionary priorities identified by the Board.***

This project can be accomplished quickly and efficiently since the County owns the property and has a solid architectural concept for the facility and property. This project is located in a Rural Area of Opportunity and it will provide various community, library and small business services as well as sheltering during disaster events to all surrounding counties. Furthermore, it can be replicated in other RAO's facing the same or similar challenges as Wakulla by providing services that are expected and demanded in today's technology driven world. While this project may not directly address the Board's discretionary priorities of new jobs above regional average household income, align with the Northwest Florida FORWARD strategic

initiative, or create jobs in targeted industries at this time, it is believed that this project will move the County forward in being able to address them in the future.

4. ***In which of the eight disproportionately affected county/counties is the proposed project or program located:*** Wakulla County
5. ***Was this proposal project or program on a list of proposed projects and programs submitted to Triumph Gulf Coast, Inc., by one (or more) of the eight disproportionately affected counties as a project and program located within its county?*** Yes, Wakulla County.
6. ***Does the Board of County Commissioners for each County listed in response to question 5, above, recommended this project or program to Triumph.*** Yes, see Attachment #1, and the BoCC approved staff submitting this application on September 23, 2019, and for the Chairman to sign this application.

APPROVALS AND AUTHORITY

1. ***If the Applicant is awarded grant funds based on this proposal, what approvals must be obtained before Applicant can execute an agreement with Triumph Gulf Coast, Inc.?***

The BoCC must accept the award and approve an award agreement.

2. ***If approval of a board, commission, council or other group is needed prior to execution of an agreement between the entity and Triumph Gulf Coast:***

A. Provide the schedule of upcoming meetings for the group for period of at least 6-months.

Wakulla County Board meets monthly on the first and third Monday, except for July and December when they meet once a month.

B. State whether that group can hold special meetings, and if so, upon how many days' notice.

Wakulla County Board can hold special meetings for emergency and time sensitive issues with at least a 5 business days' notice of the meeting.

3. ***Describe the timeline for the proposed project or program if an award of funding is approved, including milestones that will be achieved following an award through completion of the proposed project or program.***

- a. 100% Design Completed and Permits Received – 8 months from award date
- c. Procurement Completed and Construction Contract awarded – 12 months from award date
- e. Substantial Completion - TBD based on Construction Contract and Start Date
- f. Completion – TBD based on Construction Contract and Start Date
- g. Library/Shelter In-Service – 36 months from award date

4. ***Attach evidence that the undersigned has all necessary authority to execute this proposal on behalf of the entity applying for funding. This evidence may take a variety of forms, including but not limited to: a delegation of authority, citation to relevant laws or codes, policy documents, etc. In addition, please attach any support letters from partners.***

Wakulla County is a Charter County pursuant to Florida law and operates under applicable Florida Statutes, Ordinances and policies. The BoCC has the authority to enter into agreements and may authorize the Chairman or other County staff to sign agreement documents.

FUNDING AND BUDGET:

Pursuant to Section 288.8017, awards may not be used to finance 100 percent of any project or program. An awardee may not receive all funds available in any given year.

- 1. Identify the amount of funding sought from Triumph Gulf Coast, Inc. and the time period over which funding is requested.***

The total estimated project cost is \$10.8 million, with \$9.8 million in Triumph funds (or 88% of the total cost). The County is seeking these funds in FY 2020 through FY 2023. The County would need to seek quarterly reimbursements for actual expenditures over an estimated 36-month period from the award date.

- 2. What percentage of total program or project costs does the requested award from Triumph Gulf Coast, Inc. represent? (Please note that an award of funding will be for a defined monetary amount and will not be based on percentage of projected project costs.)***

The amount being requested represents 88% of Triumph funds (see Attachment 8)

- 3. Please describe the types and number of jobs expected from the proposed project or program and the expected average wage.***

Wakulla County will not be directly creating any new fulltime jobs with this project. However, the business center will support local small businesses and entrepreneurs by providing them with a dedicated business center and resources. It is anticipated that this will foster small business development, job retention and job creation. The County will market its Triumph Community Hub/Business Center in hopes of encouraging new businesses, job creation and residents to the County.

- 4. Does the potential award supplement but not supplant existing funding sources. Yes.***

If yes, describe how the potential award supplements existing funding sources. The County has not budgeted funds in the past and does not have plans to budget for this multi-functional facility or any of its separate components. The County's budget cannot support funding the cost for the construction of a project this size. However, the County will use its resources for on-going operations, maintenance and repairs as well as continue to seek grants and partnerships that enhance and increase the services and available resources.

- 5. Please provide a Project/Program Budget. Include all applicable costs and other funding sources available to support the proposal. See Attachment #8.***

- C. Provide a detailed budget narrative, including the timing and steps necessary to obtain the funding and any other pertinent budget-related information.***

The total estimated cost for the project is \$10,885,148. The County is seeking \$9.6 million in Triumph funding (88 percent of the total project estimated cost) and offers a total of \$1.2 million in-kind and cash match (12 percent of the total project estimated cost). The funds are needed for the following activities and Attachment 8 provides additional detail:

Triumph Funding Narrative - \$9.6 Million

Professional Services – The County does not have in-house professional engineering and architectural staff to design, permit, oversee construction and other necessary professional services, therefore these services will need to be contracted out. The total estimated cost for all professional such services is \$749,900.25.

Sitework Construction – The proposed project site is not developed and requires sitework to construct the parking area and the multi-purpose facility. Estimated cost is 1,235,932.00

Building Construction - The estimated cost for the proposed facility construction is \$6,131,205.00, which includes costs for the actual structure (architectural), electrical, mechanical, plumbing, general contractor cost and general contractor overhead and profit.

Furnishings – The County will be using and repurposing existing office and library furniture and computers. However, new furnishings are needed such as the portable (modular) shelving, security system, conference room furnishings, computer lab furnishings, breakroom furnishings, some new computers and other IT, and circulation desk. Estimated cost for all new furnishings is \$620,000.00

Other – The proposed facility, especially when it is activated as a Shelter, will need a back-up generator to ensure full functionality of the facility during power outages. As a power alternative and back-up system the County is proposing to install a solar power system on the roof. Total cost for the generator and solar power system is \$200,000.

Contingency – Based on 10 percent of the total estimated professional services and construction costs, estimated at \$688,110.53

County Funding Narrative for In-kind and Cash Match - \$1.2 Million

Land – Wakulla owns the property of the proposed site and therefore the County does not need funds for land acquisition and associated legal, surveying, title search and other related costs. The estimated in-kind value of the land plus associated costs and fees is \$1 million.

Current Library Circulation Material – this project is not seeking funds for circulation material. All current circulation material will be moved to the new location upon completion. The estimated in-kind value of the circulation material is estimated at \$100,000.00

Current Computer Lab Equipment – Existing computer lab equipment (i.e., computers, printers, and other related IT equipment) will be transferred the new location. Estimated in-kind value is \$60,000.00

Cash Match – The County is pledging a \$100,000 cash match.

Applicant understands that the Triumph Gulf Coast, Inc. statute requires that the award contract must include provisions requiring a performance report on the contracted activities, must account for the proper use of funds provided under the contract, and must include provisions for recovery of awards in the event the award was based upon fraudulent information or the awardee is not meeting the performance requirements of the award.

Yes No

Applicant understands that awardees must regularly report to Triumph Gulf Coast, Inc. the expenditure of funds and the status of the project or program on a schedule determined by Triumph Gulf Coast, Inc.

Yes No

Applicant acknowledges that Applicant and any co-Applicants will make books and records and other financial data available to Triumph Gulf Coast, Inc. as necessary to measure and confirm performance metrics and deliverables.

Yes No

Applicant acknowledges that Triumph Gulf Coast, Inc. reserves the right to request additional information from Applicant concerning the proposed project or program.

Yes No

ADDENDUM FOR INFRASTRUCUTRE PROJECTS

1. Program Requirements

- A. *Is the infrastructure owned by the public?* Yes
- B. *Is the infrastructure for public use or does is predominately benefit the public?* Yes
- C. *Will the public infrastructure improvements be for the exclusive benefit of any single company, corporation, or business entity?* No
- D. *Provide a detailed explanation of how the public infrastructure improvements will connect to a broader economic development vision for the community and benefit additional current and future businesses.*

This project will provide and offer a much-needed portal where small business, entrepreneurs, telecommuters or individuals seeking on-line continuing education credits or courses can access an array of services, resources and technology not elsewhere available in Wakulla County or the region. This project addresses the voice of small business that has resonated throughout the region, they need access to services, meeting space and high-speed internet. It also addresses the cry and need for shelter during devastating events such as Hurricane Michael. This project may not be transformational to larger counties and cities with a tax base to provide such a facility. However, for a small ROA such as Wakulla County it is transformational.

If funded, the project also helps the County with offsetting costs of purchasing property and constructing a new fire/ems station by allowing the County to convert the existing Library property into a much-needed fire/ems station in the Medart community.

Provide a detailed description of, and quantitative evidence demonstrating how the proposed public infrastructure project will promote:

- *Economic Recovery,*
- *Economic Diversification,*
- *Enhancement of the disproportionately affected counties*
- *Enhancement of a Targeted Industry*

This project will allow Wakulla County and other nearby counties to transform by creating and providing the first Triumph Community Hub. It addresses small county, multiple community, individual and small business needs in one central location. The multi-purpose facility will be designed so that it can be easily expanded to accommodate a growing population and the demand for services, programs and access to technology. The consolidation of shelter, services and resources at one location will allow the County to provide more services that address public safety needs and foster economic development, job creation and personal growth opportunities. It will also allow the County to be more effective and efficient at service delivery, especially by addressing disaster shelter needs. Furthermore, the shelter component will aid in providing refuge to Franklin County evacuees and others in other adjacent counties as well, making it more regionally significant.

The County anticipates the following success over the next ten years based on the Apalachee Regional Planning County (APRC), REMI Economic Summary for this project (see Attachment #7):

- Total New Jobs Created Either Direct or Indirectly: 29
- Increase in Disposable Income (current dollar): \$16,630 per household
- Increase in County GDP (fixed 2009 dollars): \$2.25 million

While this project may not directly address the Board's discretionary priorities of new jobs above regional average household income, align with Northwest Florida FORWARD strategic initiative or create jobs in targeted industries at this time, it is believed that this project will move the County forward in being able to address them in the future.

2. Additional Information

A. *Is this project an expansion of existing infrastructure project?*

This is a new project located on County owned property with existing structures. However, there is no new construction or improvements in process to either property or facilities.

B. *Provide the proposed beginning commencement date and number of dates required to complete the construction of the infrastructure project.* Construction could commence within the first 12 months of the award and should be completed within the following 24 months.

C. *What is the location of the public infrastructure project?* 318 Shadeville Highway, Crawfordville, FL

D. *Who is responsible for maintenance and upkeep?* Wakulla County

E. *What permits are necessary for the infrastructure permit? Detail whether required permits have been secured, and if not, detail the timeline for securing these permits. Additionally, if any required permits are local permits, will these permits be prioritized?*

This project may require a state/water management district permit which can take up to 90 days to secure after submission of detailed designs and drawings. Local permits will be prioritized by the County and secured by the selected general contractor and will be pulled for electric, sewer, plumbing etc.

F. *What is the future land and zoning designation of the proposed site of the infrastructure improvement, and will the improvements conform to those uses?*

The future land use is Urban Fringe while the current zoning is RR5, and these will not need to be changed for the construction of a Library/Shelter.

G. *Will an amendment to the local comprehensive plan or a development order be required on the site of the proposed project or an adjacent property to accommodate the infrastructure and potential current or future job creation opportunities?*

This project will not require an amendment to the local comprehensive plan. However, the project will require a development order and the approval of a site plan and the subsequent Development Permit Application.

H. *Does this project have a local match amount? If yes, please describe the entity providing the match and amount.*

See the Funding and Budget section of this application and Attachment 8.

I. *Provide any additional information or attachments to be considered for this proposal.*
None.

ADDENDUM FOR LOCAL ACTION PLAN

1. Program Requirements

- A. Describe how the proposed award will establish and maintain equipment and trained personnel for local action plans of response to respond to disasters.**

Not applicable to this project.

- B. Describe the type and amount of equipment and trained personnel that will be established or maintained by the proposed award.**

The County will work with WSCO, WCFR, American Red Cross, and other recognized volunteer groups to ensure that proper and adequate furnishings are available when the Shelter is activated. It is the County's understanding that the American Red Cross will operate and provide cots, water and other essential needs to all activated shelters.

- C. Identify the specific local action plans (e.g., Coastal Impacts Assistance Program) that will benefit from the proposed award.**

Local Mitigation Strategy Plan, see Attachment #9.

- D. Provide a detailed explanation of how the proposed award will connect to a broader economic recovery, diversification, enhancement of the disproportionately affected counties and/or enhancement of a targeted industry.**

This project will provide and offer a much-needed portal where small business, entrepreneurs, telecommuters or individuals seeking on-line continuing education credits or courses can access an array of services, resources and technology not elsewhere available in Wakulla County or the region. This project addresses the voice of small business that has resonated throughout the region, they need access to services, meeting space and high-speed internet. It also addresses the cry and need for shelter during devastating events such as Hurricane Michael. This project may not be transformational to larger counties and cities with a tax base to provide such a facility. However, for a small ROA such as Wakulla County it is transformational.

If funded, the project also helps the County with offsetting costs of purchasing property and constructing a new fire/ems station by allowing the County to convert the existing Library property into a much-needed fire/ems station in the Medart community.

- E. Provide a detailed description of the quantitative evidence demonstrating how the proposed will promote:**

- *Economic recovery,*
- *Economic Diversification*
- *Enhancement of the disproportionately affected counties*
- *Enhancement of a Targeted Industry*

This project will allow Wakulla County and other nearby counties to transform by creating and providing the first Triumph Community Hub. It addresses small county, multiple community, individual and small business needs in one central location. The multi-purpose facility will be designed so that it can be easily expanded to accommodate a growing population and the demand for services, programs and access to technology. The consolidation of shelter, services and resources at one location will allow the County to provide more services that address public safety needs and foster economic development, job creation and personal growth opportunities. It will also allow the County to be more effective and efficient at service delivery, especially by addressing disaster shelter needs. Furthermore, the shelter component will aid in providing refuge to Franklin County evacuees and others in other adjacent counties as well, making it more regionally significant.

The County anticipates the following success over the next ten years based on the Apalachee Regional Planning County (APRC), REMI Economic Summary for this project (see Attachment #7):

- Total New Jobs Created Either Direct or Indirectly: 29
- Increase in Disposable Income (current dollar): \$16,630 per household
- Increase in County GDP (fixed 2009 dollars): \$2.25 million

While this project may not directly address the Board's discretionary priorities of new jobs above regional average household income, align with Northwest Florida FORWARD strategic initiative or create jobs in targeted industries at this time, it is believed that this project will move the County forward in being able to address them in the future.

2. *Additional Information*

A. What is the location of the local action program that will be supported by the proposed award?

3093 Crawfordville Highway/US 319, Crawfordville, Wakulla County, Florida.

B. Detail the current status of the local action plans (e.g., new plans, existing plans, etc.) that will be supported by the proposed award and provide a detailed description of when and how the proposed award will be implemented.

The County's current local action plan was adopted by the BoCC in March 7, 2016, and the last amendment was made May 15, 2019. The Plan is amended as necessary and as determined by the Local Mitigation Strategy Workgroup.

C. Provide any additional information or attachments to be considered for this proposal.

None.

I, the undersigned, do hereby certify that I have express authority to sign this proposal on my behalf or on behalf of the Wakulla County board of County Commissioners:

Name of Applicant: Wakulla County Board of County Commissioners

Name and Title of Authorized Representative: Chuck Hess, Ph.D., Chairman

Representative Signature:  _____

Signature Date: September 23, 2019

ATTACHMENTS

Attachment #1 – Hurricane Michael Application Addendum

Attachment #2 – FY 2018-19 Audited Financial

Attachment #3 - Triumph Letter Accepting Pre-Application

Attachment #4 – Community Center Complex Concept Plan

Attachment #5 – Adopted Infrastructure Plan, Community Center Concept, page 53

Attachment # 6– Architectural drawing and proposed building specifications

Attachment #7 – ARPC REMI Economic Impact Report

Attachment #8 - Estimated Budget

Attachment #9 - Local Mitigation Strategy Plan, Appendix 7, Project #33

ATTACHMENT #1



June 3, 2019

**BOARD OF
COUNTY COMMISSIONERS**

Charles Hess, Ph.D.
Chairman, District 5

Mike Stewart
Vice-Chairman, District 3

Ralph Thomas
District 1

Randy Merritt
District 2

Quincee Messersmith
District 4

J. David Edwards
County Administrator

Heather J. Encinosa
County Attorney
(850) 224-4070

Mr. Don Gaetz, Chairman
Triumph Gulf Coast, Inc.
Post Office Box 12007
Tallahassee, Florida 32317

Dear Chairman Gaetz,

The Wakulla County Board of County Commissioners (Board) continually reviews projects it supports for Triumph funding and seeks new proposals from the community to ensure that supported projects reflect current transformational needs. Therefore, on June 3, 2019, the Board approved updates to its list of County supported and priority Triumph projects.

Enclosed is a summary of the updates and the June 3, 2019, updated list of Board supported projects for Triumph funding.

Again, thank you for Triumph's support as we move forward on the road to recovery as well as preparing for the future.

Sincerely,

Charles Hess, Ph.D.
Chairman

Enclosures

/stk

C: Mr. David Edwards, County Administrator
Mr. Robert Pearce, Superintendent of Schools, Wakulla County
Ms. Sheree T. Keeler, Director of Intergovernmental Affairs

Office of Intergovernmental Affairs
Post Office Box 1263
Crawfordville, FL 32326
(850) 926-0919 x 705
www.mywakulla.com

**SUMMARY OF JUNE 3, 2019, UPDATES TO
WAKULLA COUNTY'S LIST OF SUPPORTED TRIUMPH GULF COAST, INC. PROJECTS**

Priority and Project Title	Applicant	Status
#2 New County Library – PROJECT RENAMED TO: Multi-Purpose Library Facility	Wakulla County	Staff withdrew the original pre-application for a “Library Facility” with a cat 4 high risk shelter and submitted a pre-application for a Multi-Purpose Library facility that includes a cat 5 high risk shelter and dedicated business center.
REMOVED FROM LIST #3 Wakulla County Learning Center	Wakulla County School Board	WCSB withdrew the application
ADDED TO LIST #3 Drone Program	Wakulla County School Board	Introduces technology innovation classes for grades 3-5 (afterschool programs) and 9-K in the areas of Small Unmanned Aircraft Systems (UAS) Safety Certification and Visual Line of Sight Systems Operator (VSO).

ATTACHMENT #3

Triumph Gulf Coast, Inc.
MyFloridaTriumph.com

Cori Henderson
Program Administrator
850.387.9405

chenderson@myfloridatriumph.com

June 26, 2019

Sheree Keeler
Wakulla County
PO Box 1263
Crawfordville, FL 32327

RE: Triumph Pre-Application No. 201 - Wakulla Community Hub

Dear Ms. Keeler:

Thank you for submitting a Pre-Application to Triumph Gulf Coast, Inc.

Based on an initial review by the staff of Triumph Gulf Coast, Inc., ("TGC") and a concurrence of the Board, the project or program outlined in your Pre-Application meets the minimum requirements for further consideration. As a result, you may proceed to submit a full Application for formal consideration.

There is no deadline for submission of formal Applications. Applications will be considered as they are received; however, because Applications require varying levels of due diligence, there is no way to provide any additional information on how quickly any specific Application will receive final action.

This letter is not a representation or guarantee that the project or program will receive any funding from TGC; nor is it a guarantee that the project or program will remain eligible if changes are made during the Application process.

Triumph Gulf Coast funding is intended to support programs that generate maximum economic activity. Applicants have asked how best to document the economic activity that would likely result from their proposed project. At the January 2018 Triumph Board of Directors meeting, Dr. Rick Harper discussed characteristics most often associated with higher levels of economic activity. These factors include things like amount of matching funds, and whether the project will become self-sustaining as Triumph dollars are used up. An audio transcript of Dr. Harper's remarks is available at <https://www.myfloridatriumph.com/meetings/> under the tab for the January 29th, 2018 meeting.

If you have any questions, comments or concerns regarding this letter or the TGC Application process, please do not hesitate to contact me at chenderson@myfloridatriumph.com.

Thank you for your continued interest.

Very truly yours,



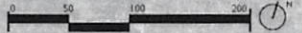
Cori Henderson
Program Administrator

ATTACHMENT #4

247



Attachment 4



Legend	
1	Existing Building
2	Library
3a	8 Lane - 25 Yard Lap Pool
3b	Wading Pool / Water Slide
4a	Pool Equipment
4b	Pool Maintenance Access
5a	Overhead Pavilion
5b	Pool Bath House - Phase 1 (Splash Pad)
5c	Pool Bath House - Phase 2 (Pool)
5d	Pool Access Gate
6	Splash Pad
7	Picnic Area
8	Playground / Beach Volleyball Court
9	Future Parking
10	Community Garden & Storage Shed
11	Covered Walkway
12	Skate Park / Basketball Court
13	Fitness Trail (Outdoor Fitness Equipment)
14	Stormwater Retention
15	Expanded Parking Lot (+/- 120 Spaces)
16	Accessible Parking Spaces (5 Total)
17	Existing Asphalt Trail
18	Proposed Asphalt Trail
19	Proposed Sidewalk

Wakulla Community Center
Crawfordville, Florida

Concept Plan

November 2017 Contact: Kelsey Lewis, PE (850) 553-3512



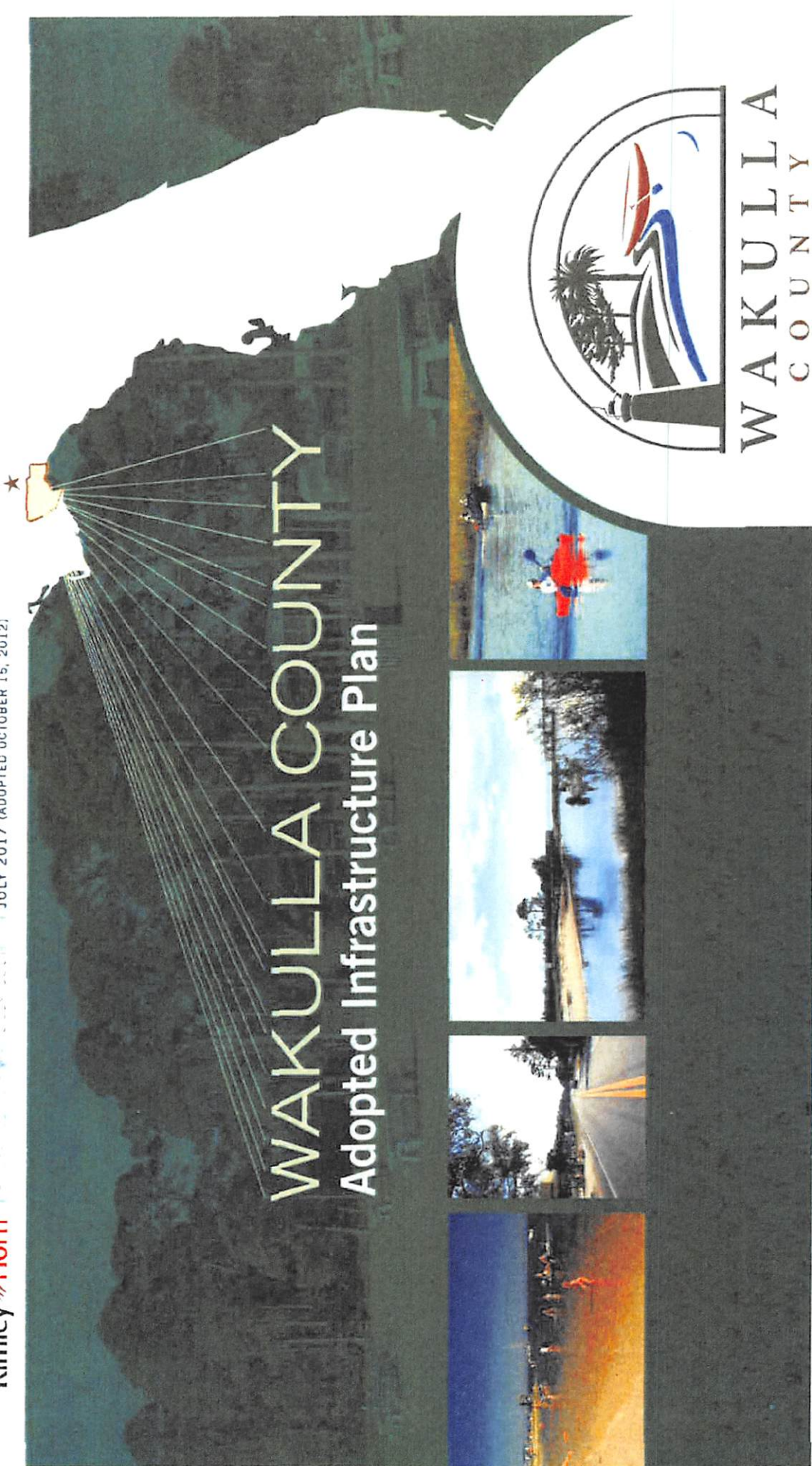
ATTACHMENT #5

644

Kimley»Horn

WAKULLA COUNTY, FLORIDA
WAKULLA COUNTY, FLORIDA
JULY 2017 (ADOPTED OCTOBER 15, 2012)

WAKULLA COUNTY Adopted Infrastructure Plan



Wakulla County Community Center

Location

Shadeville Road and Trice Lane, Shadeville, FL.

Narrative

PROPOSED PROJECT:

- » Build recreational facilities that include:
 - Swimming pool
 - Multi-use fields
 - Walking paths
 - Exercise stations
 - Beach volleyball courts
 - Picnic pavilion
 - Restroom facility
 - Skate park
 - Splash pad
 - New public library facility



EXISTING CHARACTERISTICS:

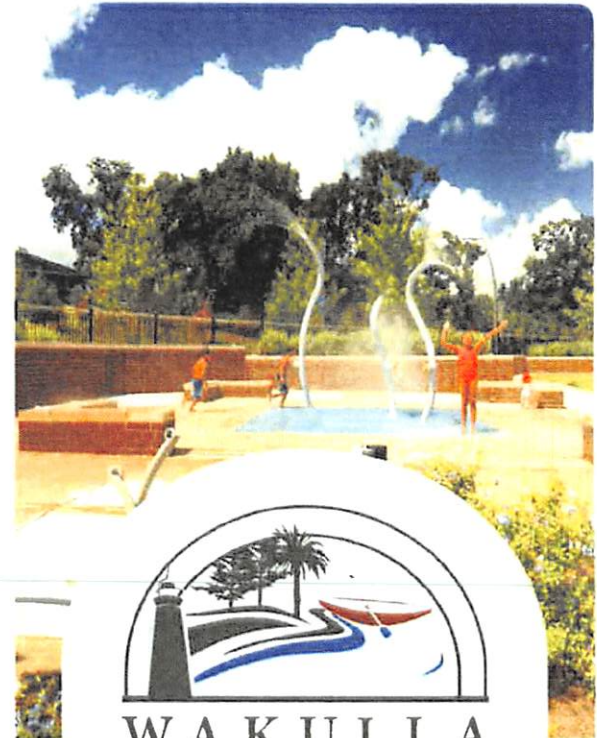
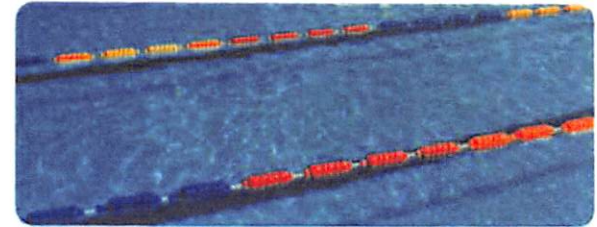
- » Property is 22.32 acres (approximately half of the property has been cleared)
- » Pedestrian traffic is from local residents
- » Automobile traffic is from residents and drivers using Trice Lane to reach Crawfordville highway

ADDITIONAL INFORMATION:

- » See *Accomplishments and Updates 2012–2016*, pages 5-6

Cost Estimate: \$6,000,000

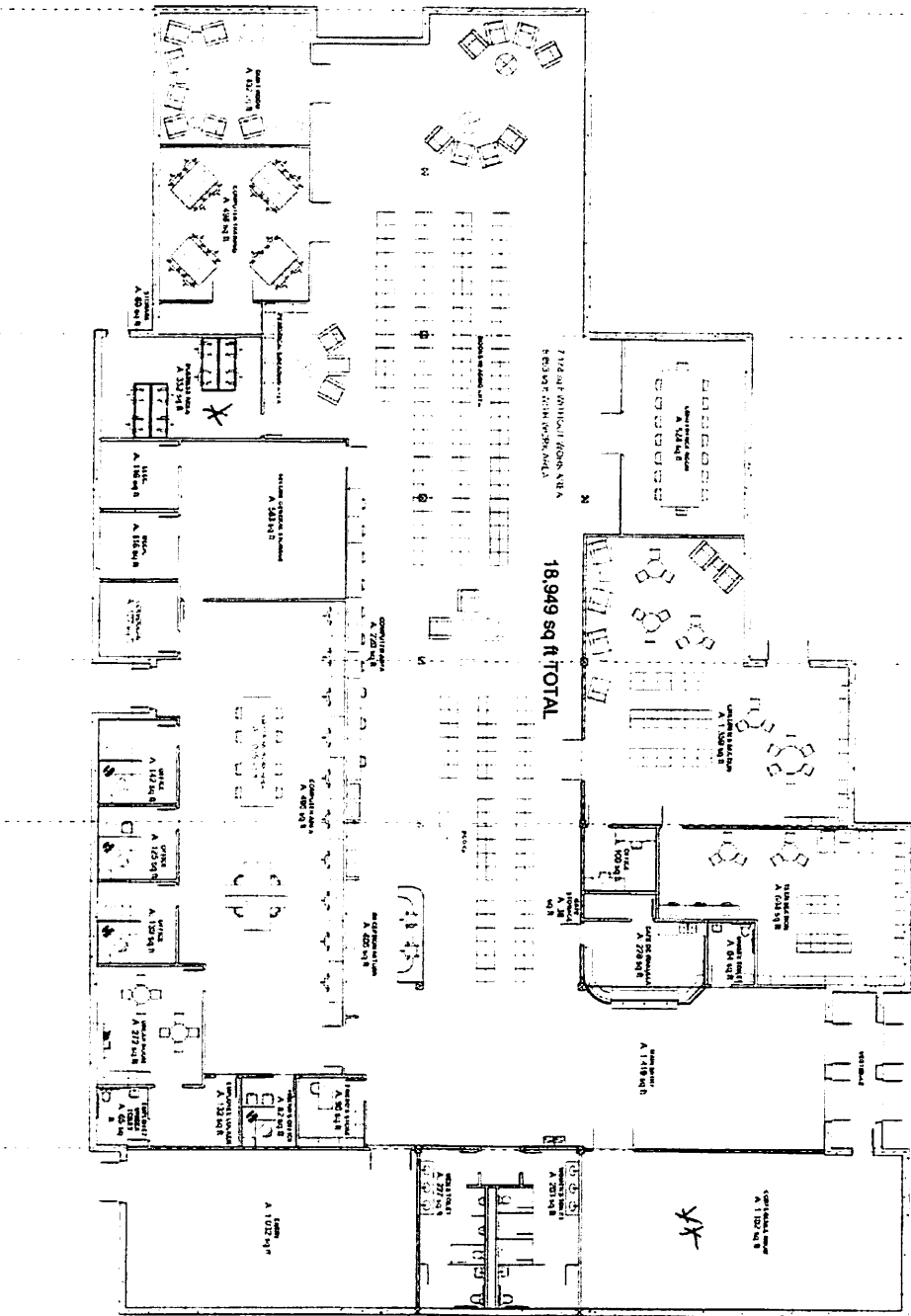
53



WAKULLA
COUNTY

ATTACHMENT #6

647



18,949 sq ft TOTAL

772 SQ FT WITHOUT ROOM X18A & 203 SQ FT WITH ROOM X18A & X20

1 - RAMP UP FLOOR PLAN

TSD
*//** options for bus user garden

Alachua, FL, AZA

WAKULLA LIBRARY/SHELTER

PRELIMINARY
PHASE 1

SIGNATURE & SEAL

HAMMOND
Partners
GROUP, LLC
ARCHITECTS

1000 N. UNIVERSITY AVENUE, SUITE 100
GAINESVILLE, FL 32601
TEL: 352.336.1111
WWW.HAMMONDGROUP.COM

NO.	REVISIONS	DATE	BY	CHKD	APP'D
1	ISSUED FOR PERMIT	08/14/11	MM	MM	MM
2	REVISED	08/14/11	MM	MM	MM
3	REVISED	08/14/11	MM	MM	MM
4	REVISED	08/14/11	MM	MM	MM
5	REVISED	08/14/11	MM	MM	MM

DRAWING
A1.01

ATTACHMENT 7

650

Economic Impact Report

Direct Effects of Establishing the County Multi-Purpose Facility in Wakulla County, Florida

As Wakulla County embraces resiliency in response to the devastation caused by Hurricane Michael, the County's Multi-Purpose Facility project represents an exciting opportunity for economic growth and community resilience. The Apalachee Regional Planning Council (ARPC), in support of this project, has created an economic model, using REMI PI+ (v2.2), to forecast causally linked impacts of the facility on Wakulla County. The 10-year model forecasts economic impact from year 2020 through 2030.

This brief summarizes the direct economic impacts of constructing and operating the Multi-Purpose Facility. The following table outlines model assumptions and inputs given:

WAKULLA COUNTY MULTI-PURPOSE FACILITY: MODEL ASSUMPTIONS AND INPUTS

INDUSTRY (NAICS 3-DIGIT)	NAICS 519 (<i>Information Industry</i>)
CONSTRUCTION TIMELINE	January 2020 – December 2022
START OF FULL TIME FACILITY OPERATION	January 2023
JOBS CREATED, <i>INFORMATION INDUSTRY</i>	6.5 FTE starting January 2023
JOBS CREATED, <i>CONSTRUCTION INDUSTRY</i>	20 FTE from year 2020 through 2022
AVERAGE ANNUAL WAGE RATE, <i>INFORMATION INDUSTRY</i>	\$51,607 per year
STATE AND LOCAL GOVERNMENT SPENDING	\$138,961 in year 2020
CONSTRUCTION COST	\$9,005,147.78 Input as \$3,001,716 per construction year
EQUIPMENT COST, <i>COMPUTER AND PERIPHERAL</i>	\$165,000 in year 2022

EQUIPMENT COST, OTHER EQUIPMENT

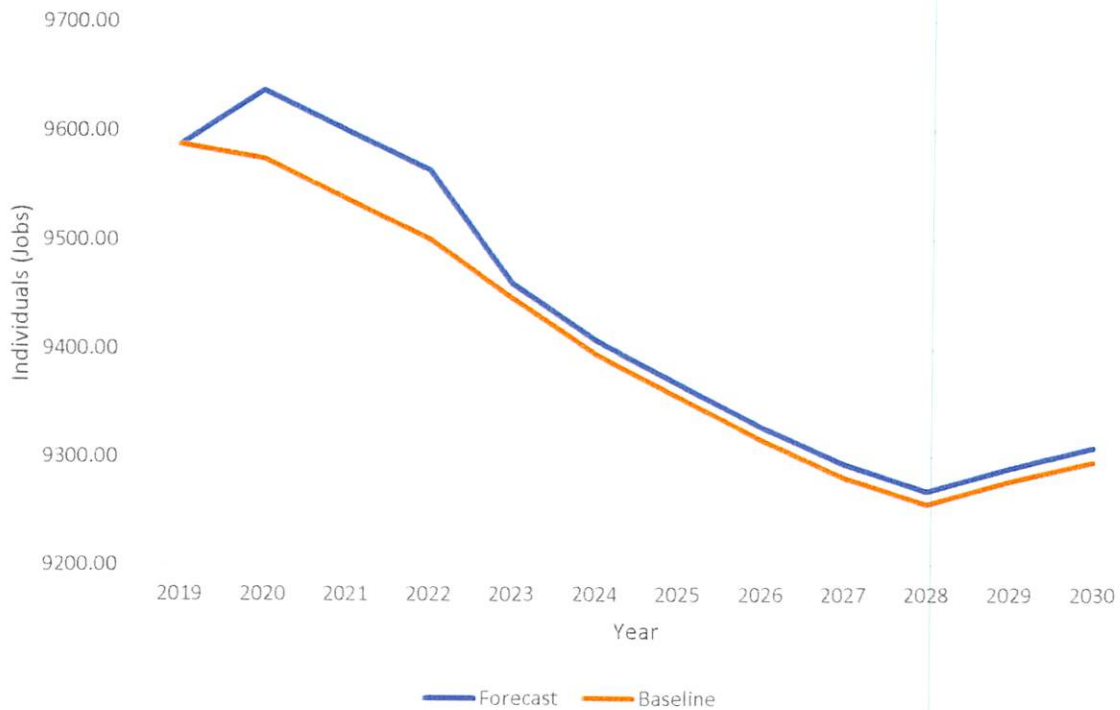
\$455,000 in year 2022

According to the economic model, forecasted impacts of the Multi-Purpose Facility are as follows:

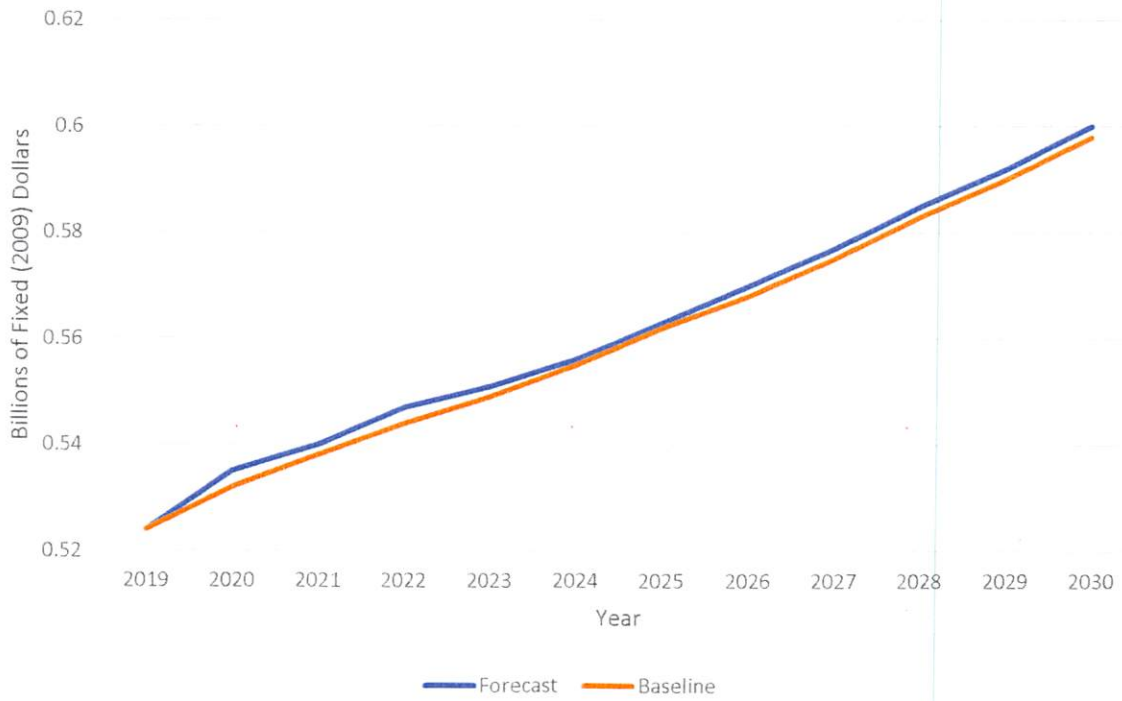
SUMMARY OF IMPACTS ON WAKULLA COUNTY (10-YEAR AVERAGE), 2020-2030

TOTAL EMPLOYMENT CREATED DIRECTLY OR INDIRECTLY	29 jobs created
INCREASE IN DISPOSABLE PERSONAL INCOME	\$16,630.00 (current dollars)
INCREASE IN GDP (OF COUNTY)	\$2.259 million (fixed 2009 dollars)

Long-Term Benefit to Total Employment in Wakulla County, 2019-2030



Long-Term Benefit to Gross Domestic Product (GDP) in Wakulla County, 2019-2030



ATTACHMENT #8

Activity	Estimated Cost	% of Cost
Architectural	\$ 661,088.20	
Construction Inspection (CEI)	\$ 61,312.05	
Engineering - Civil	\$ 27,500.00	
Professional Services Total	\$ 749,900.25	
Site Work - Parking (w/10% contingency factor)	\$ 756,255.00	
Site work - Multi-Prupose Facility	\$ 479,677.00	
Site Work Total	\$ 1,235,932.00	
Architectural	\$ 2,084,500.00	
Electrical	\$ 1,231,750.00	
Mechanical	\$ 947,500.00	
Plumbing	\$ 54,000.00	
General Conditions/Contractor Overhead-Profit	\$ 1,295,325.00	
Contractors Overhead and Profit	\$ 518,130.00	
Building Construction Total	\$ 6,131,205.00	
Portable Library Shelving	\$ 350,000.00	
Building Security and Monitoring System	\$ 100,000.00	
Conference Tables and Chairs	\$ 50,000.00	
Computer Lab Furnishings	\$ 25,000.00	
Breakroom Furnishings	\$ 10,000.00	
Computers and other IT	\$ 65,000.00	
Circulation Desk	\$ 20,000.00	
New Furnishings Total	\$ 620,000.00	
Back up Generator	\$ 100,000.00	
Roof Solar Power System	\$ 100,000.00	
Other Total	\$ 200,000.00	
SUB-TOTAL ESTIMATED COST	\$ 8,937,037.25	
Contingency @ 10% of Estimated Professional Services and Building Construction Cost	\$ 688,110.53	
TOTAL TRIUMPH FUNDING REQUESTED	\$ 9,625,147.78	88%
Estimated Land Value subject to current appraisal	\$ 1,000,000.00	
Estimated Value of Current Library Circulation Material	\$ 100,000.00	
Estimated Value of Current Computer Lab Equipment	\$ 60,000.00	
County Cash Match -	\$ 100,000.00	
TOTAL COUNTY CONTRIBUTION	\$ 1,260,000.00	12%
TOTAL PROJECT COST	\$ 10,885,147.78	100%

ATTACHMENT #9

KEY CATEGORIES	
Project kept as is without changes	
Project kept, with changes	

2019 Priority	Project/Program Name	Description	Location*	Project/ Hazard Mitigation Program Category	Lead Agency	Estimate of Project Costs	Estimate of Project Time	Potential Funding Source
30	Raise Mashas Sands Road	Raise Mashas Sands Road from the condos down to the boat ramp to improve ingress and egress during flooding events.	Panacea	Critical infrastructure protection, hurricane, tsunami, & flood mitigation	County Administration/Public Works	\$5,000,000	36 months	HMGP, PDM, FMA
2019 Status: This is a project that was added on September 26, 2018.								
31	Road elevation study	Countywide study on flood prone areas to see where roadways should be raised for better protection of evacuation routes and for re-entry	Countywide	Critical infrastructure protection, hurricane, tsunami, & flood mitigation	Office of County Admin./Public Works	\$1,000,000	24 months	HMGP, PDM, FMA
2019 Status: This is a project that was added on September 26, 2018.								
32	Live Oak Island sewerage	Extend central sewer services to Live Oak Island so existing on-site septic systems can be removed from floodplain	Shell Point area	Critical facility retrofitting & stormwater management	Office of County Admin./Public Works	\$5,000,000	36 months	PDM, FMA
2019 Status: This is a project that was added on November 26, 2018.								
33	Category 3 Shelter	Construct an evacuation shelter that can withstand a hurricane category 3 or higher storm	Countywide	Hurricane impact reductions	Office of County Admin.	\$4,000,000+	36 months	Legislative Funds, PDM
2019 Status: This is a project that was added on November 26, 2018.								
34	First Responder Communication System	Perform an assessment of the communication system upgrade options and purchase/install new system	Countywide	Critical facility retrofitting/public safety	Office of County Admin./WCSO	\$3,500,000	12 months	Legislative Funds, TRIUMPH
2019 Status: This project was added at the February 26, 2019 meeting.								

657

